

FRATANTONI
KERAMOS

Daniilo Fratantoni

PAVIMENTI & RIVESTIMENTI

“ Dalla Terra nasce
ogni terraglia,
dal fuoco nasce,
dall'aria, dall'acqua,
nasce ogni forma dall'informe,
dal miscuglio l'ordine,
la bellezza dal bisogno,
l'armonia dal necessario.
Amore e pazienza muovono il mondo,
muovono la mano,
intelligenza,
creano il piano e il fondo,
il pieno e il vuoto,
il concavo e il convesso. ”

Vincenzo Consolo



CERAMICHE FRATANTONI

La Ditta “ Fratelli Fratantoni” viene fondata nel 1935 da Pietro, Saro, Edoardo e Nino, figli di don Filippo Fratantoni anche lui vecchio ceramicaro come tanti a Santo Stefano. Nei primi anni i fratelli si dedicano alla produzione manuale di oggetti in terracotta foggianti al tornio a cui successivamente affiancano quella meccanica dei tradizionali vasi per uso vivaistico.

Successivamente Edoardo e Nino completano la produzione con la ceramica decorata divenendo in breve tempo una delle aziende più importanti nel settore della ceramica siciliana. Negli anni ‘70 sperimentano con successo e brevettano, primi in Italia, l’applicazione dello smalto e del decoro alle lastre di basalto lavico dell’Etna e riprendono la produzione delle tipiche mattonelle maiolicate una volta vanto e orgoglio dell’antica tradizione stefanese. Oggi la “Ceramiche Fratantoni” è un’azienda leader nel settore ceramico per qualità e sperimentazione di nuove tecnologie fra cui la serigrafia computerizzata. La sua produzione più esclusiva rimane comunque quella dei piani di lava smaltata e decorata e delle tradizionali mattonelle fatte a mano.



ieri





oggi





la produzione

- *smaltati* -
- *spruzzati* -
- *spugnati* -
- *pennellati* -

- *blu tradizionale* -

- *blu eoliano* -
- *rosa antico* -
- *mielato* -
- *verde antico* -

- *la vela* -

- *santo stefano* -

- *mediterraneo* -

- *fasce e pezzi speciali* -

- *serie lunaria* -

- *cotto* -

- *lava* -



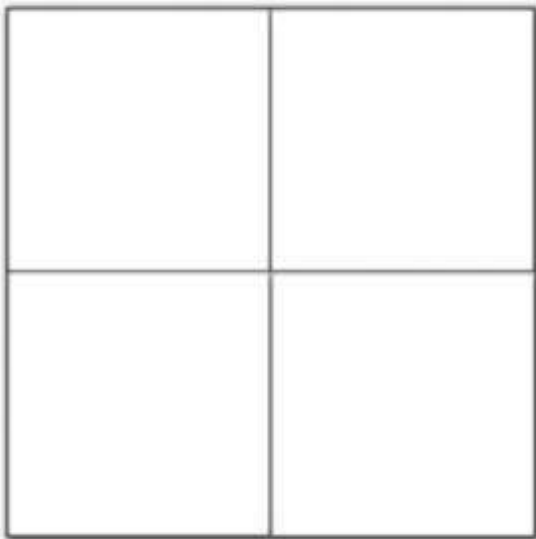
*smaltati
spruzzati
spugnati
pennellati*



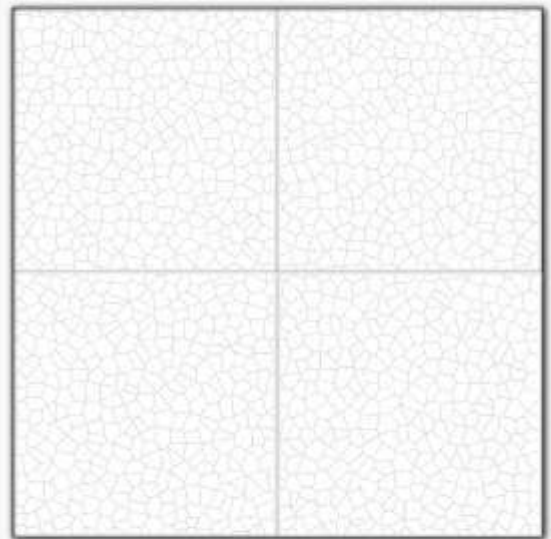
i colori tipici della tradizione stefanese



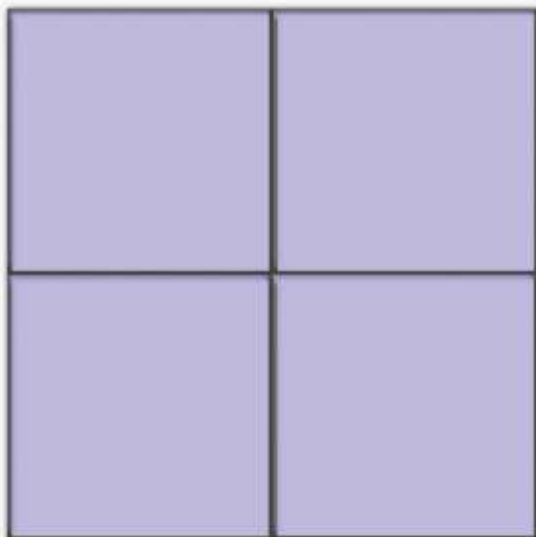
smaltati



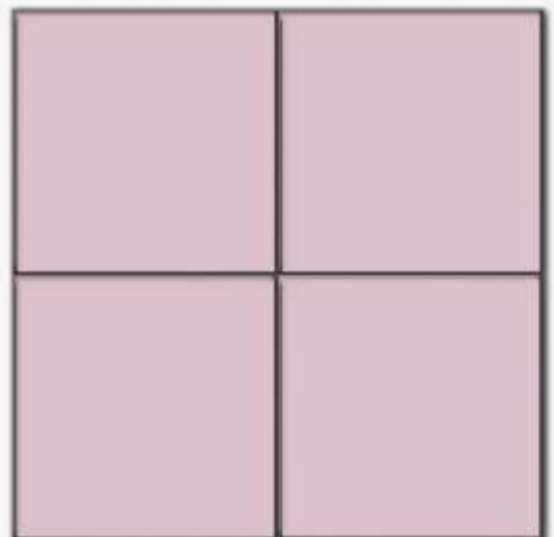
bianco lucido



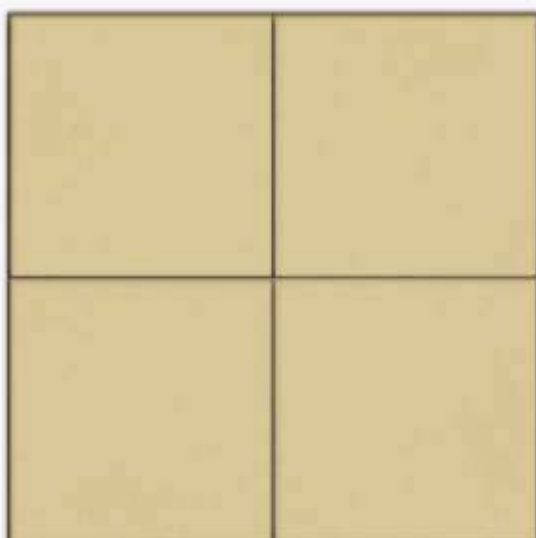
bianco antico



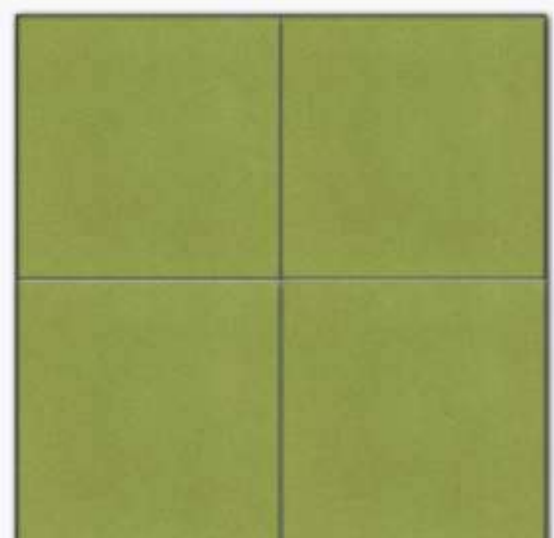
blu eoliano



rosa antico



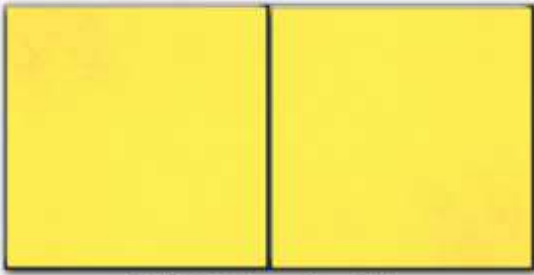
miele



verde antico



spruzzati



SPR1 giallo



SPR2 bruno rosso



SPR3 verde smeraldo



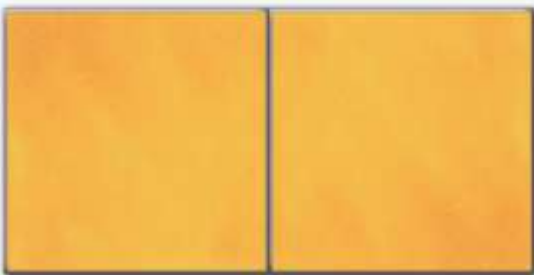
SPR4 verde rame



SPR5 azzurro



SPR6 blu



SPR7 arancio



SPR8 rosa salmone



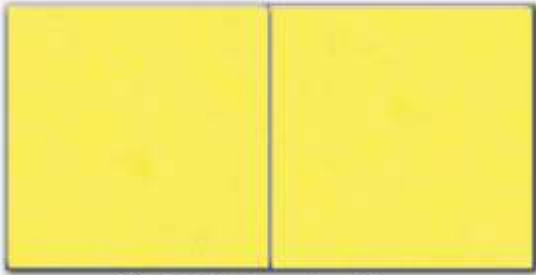
SPR9 rosa antico



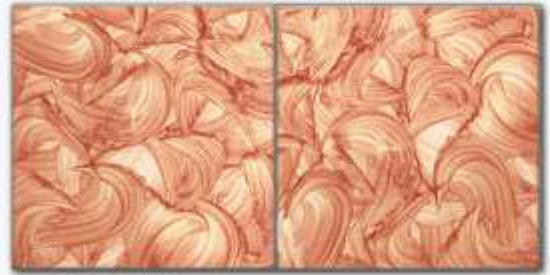
SPR10 miele



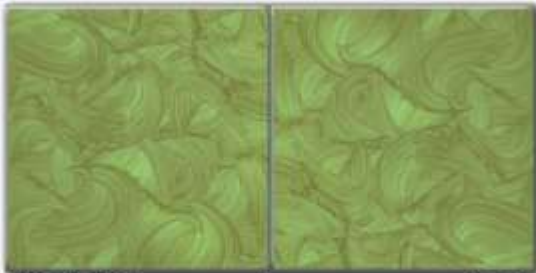
spugnati



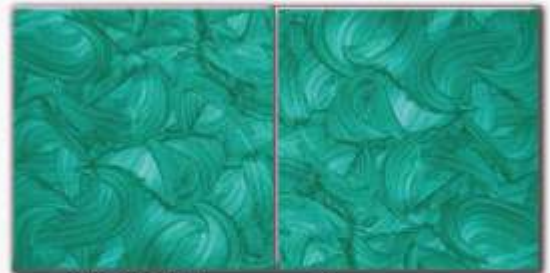
SPU1 giallo



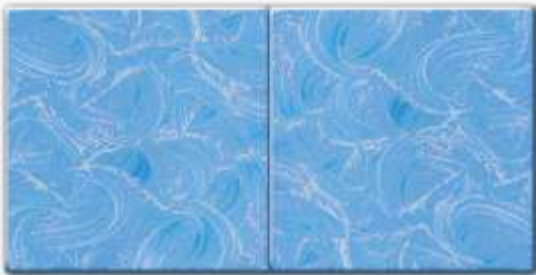
SPU2 bruno rosso



SPU3 verde smeraldo



SPU4 verde rame



SPU5 azzurro



SPU6 blu



SPU7 arancio



SPU8 rosa salmone



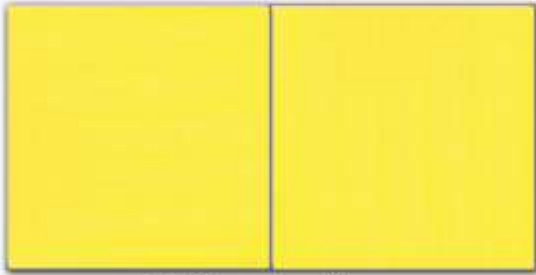
SPU9 rosa antico



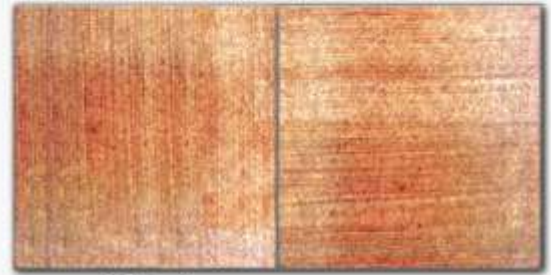
SPU10 miele



pennellati



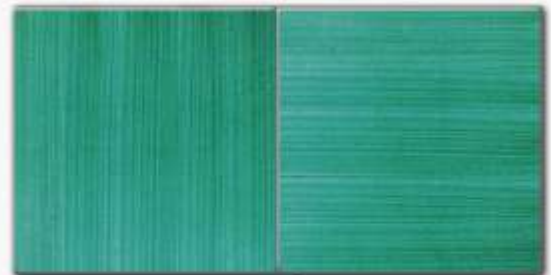
P1 giallo



P2 bruno rosso



P3 verde smeraldo



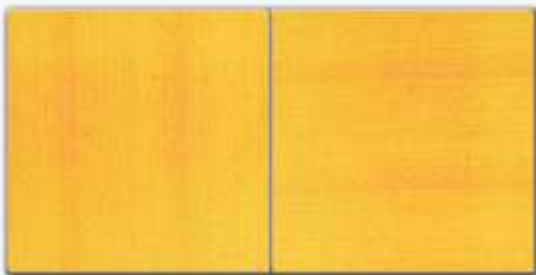
P4 verde rame



P5 azzurro



P6 blu



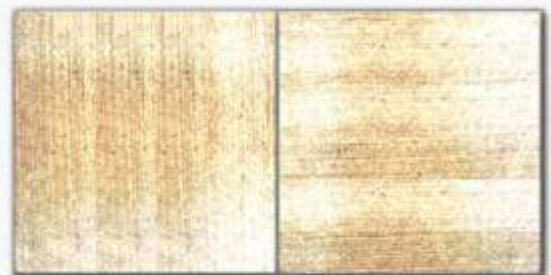
P7 arancio



P8 rosa salmone



P9 rosa antico



P10 miele





blu tradizionale
base bianco antico
con decoro blu

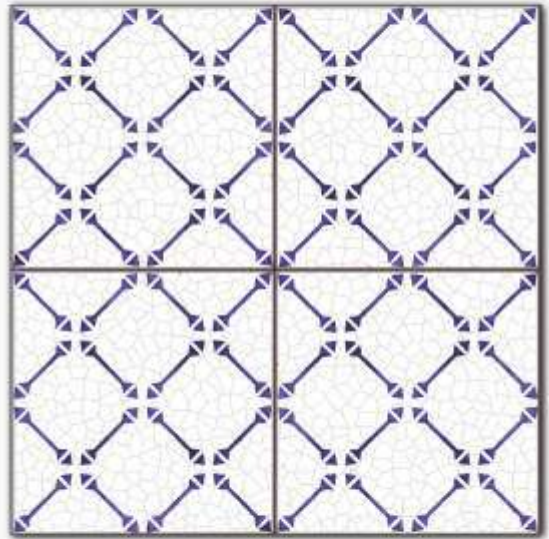




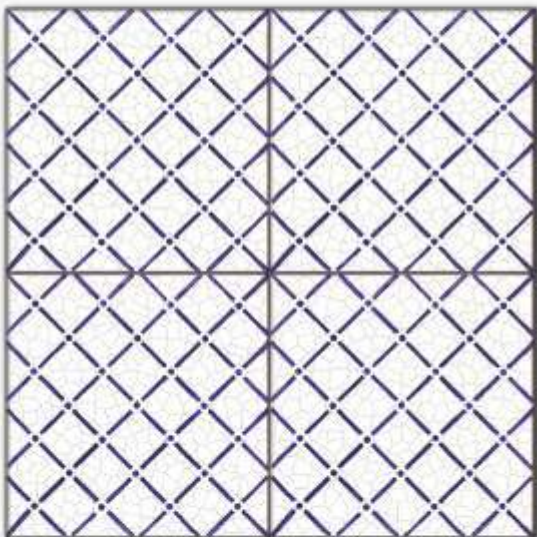
blu tradizionale



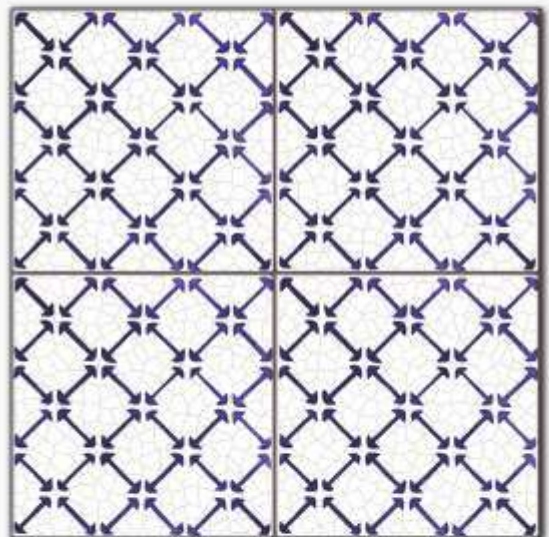
B1



B2



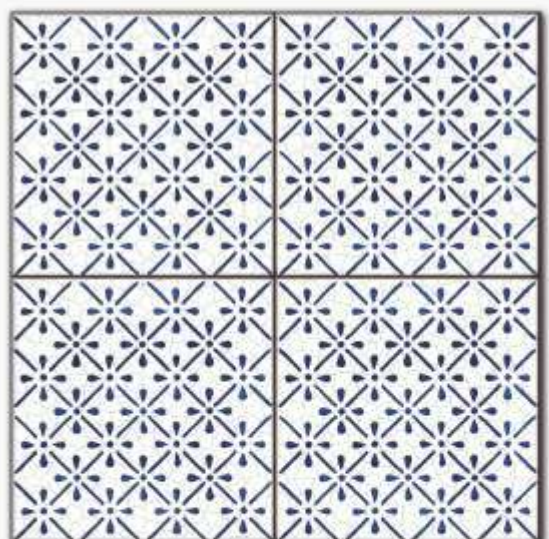
B3



B4



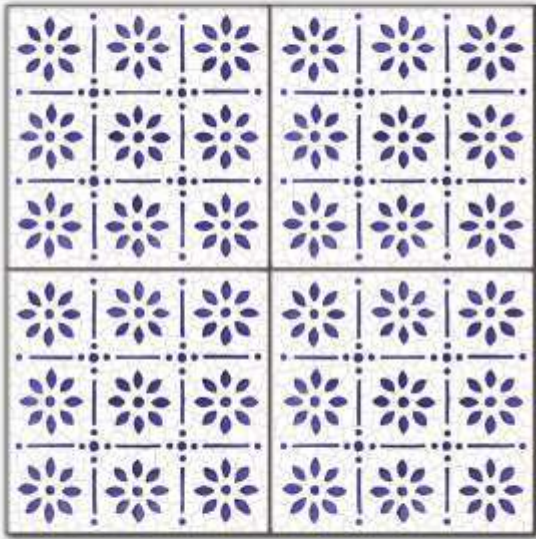
B5



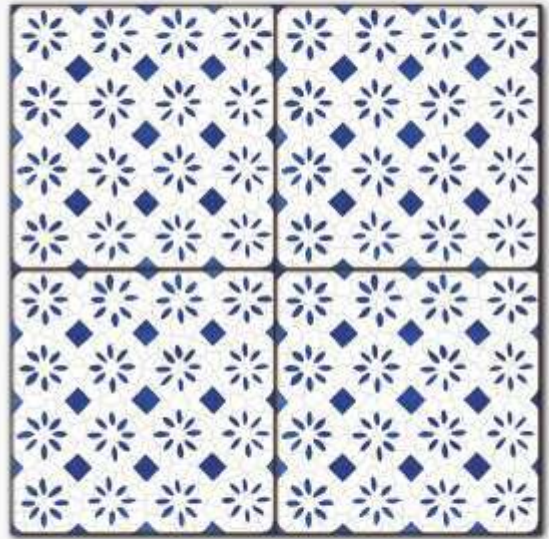
B6



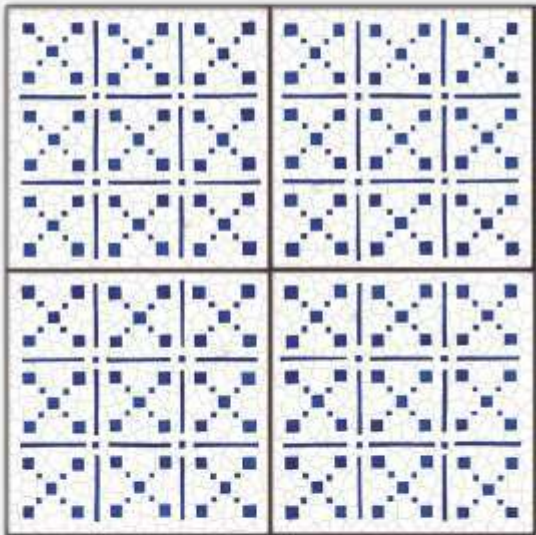
blu tradizionale



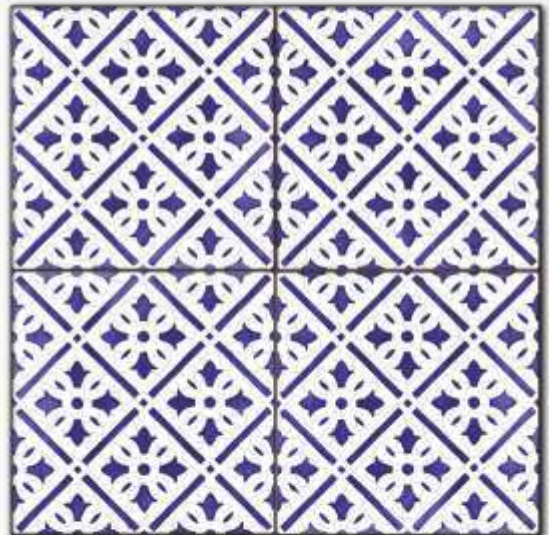
B7



B8



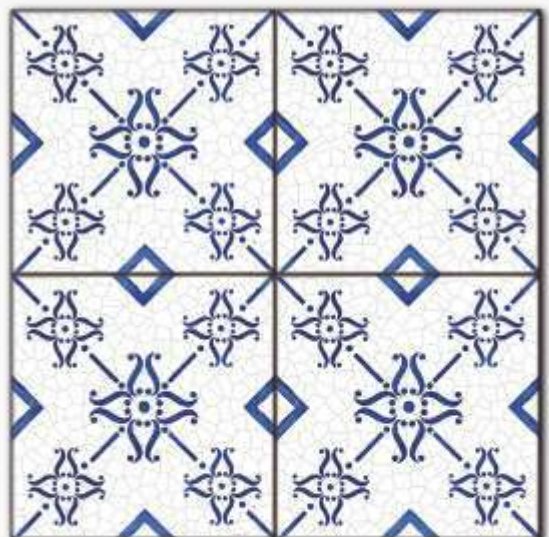
B9



B10



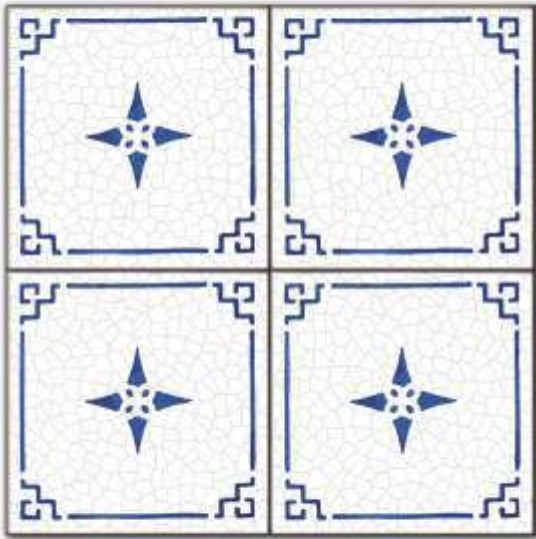
B11



B12



blu tradizionale



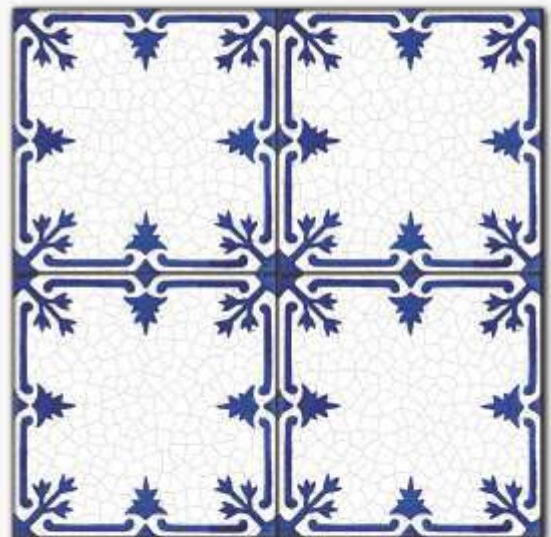
B13



B14



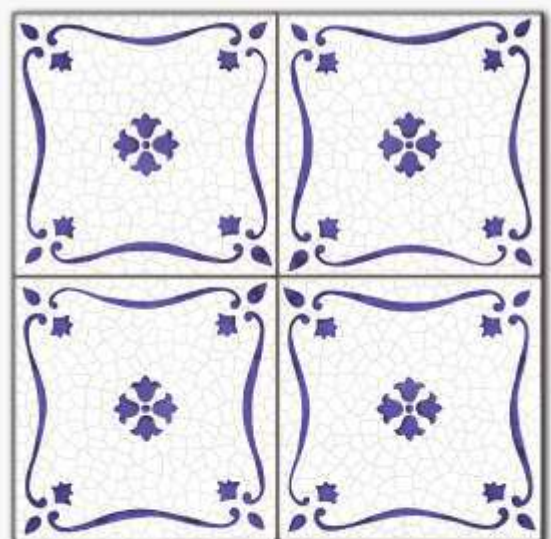
B15



B16



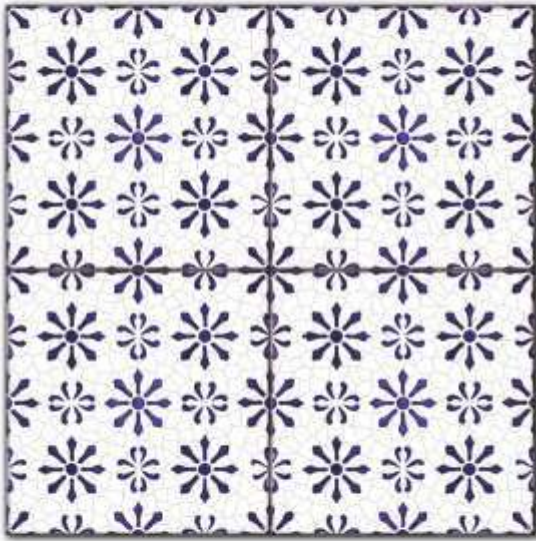
B17



B18



blu tradizionale



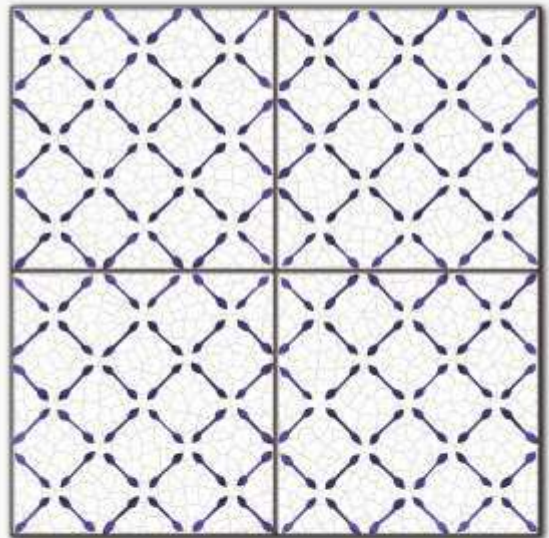
B19



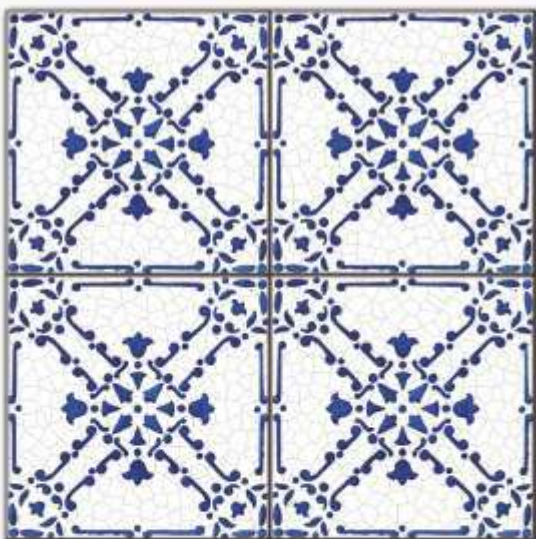
B20



B21



B22



B23



B24



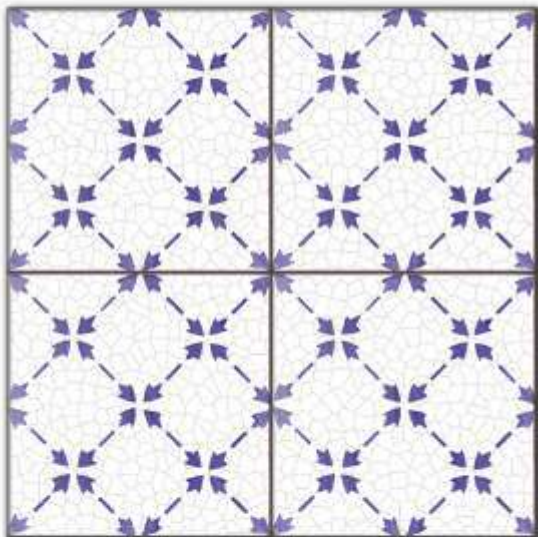
blu tradizionale



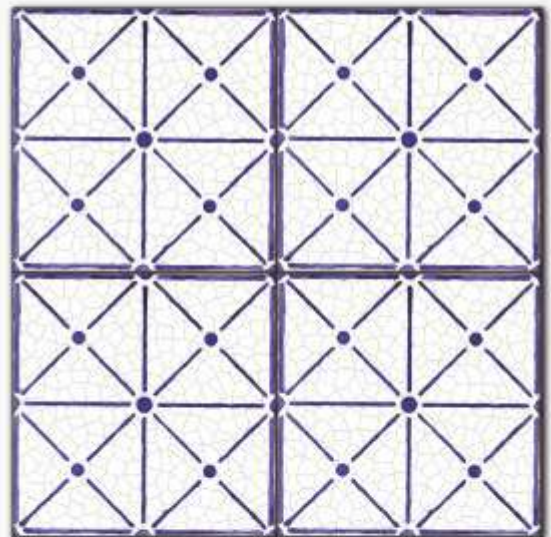
B25



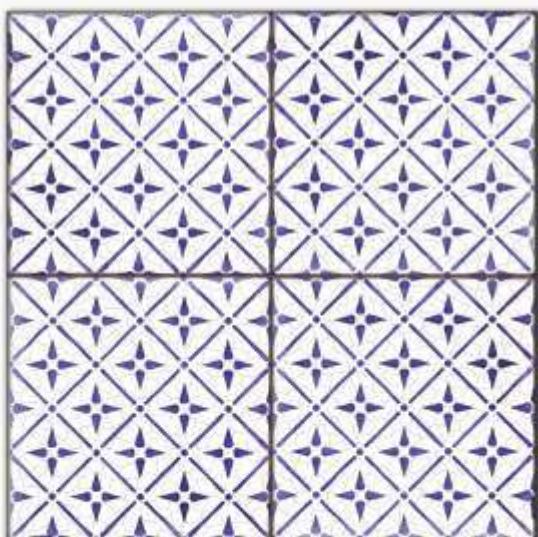
B26



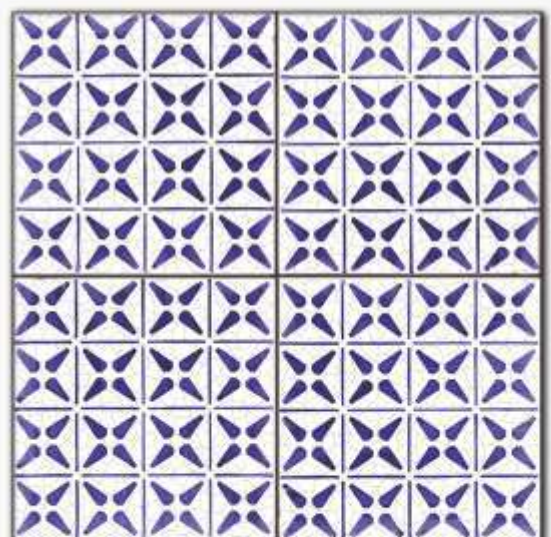
B27



B28



B29



B30





blu eoliano



*base smalto azzurro con
decoro a più colori*



blu eoliano



BB1



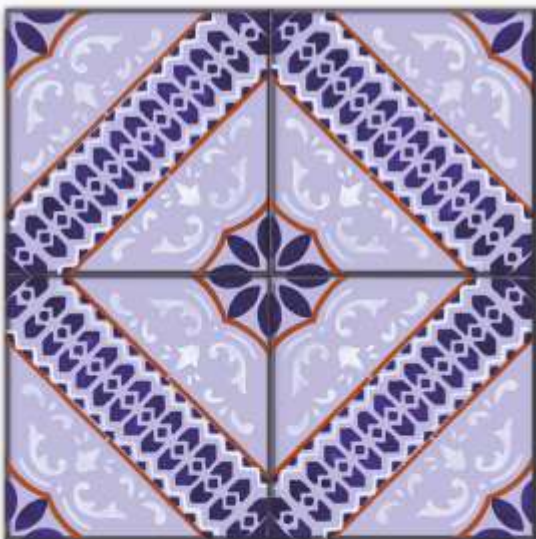
BB2



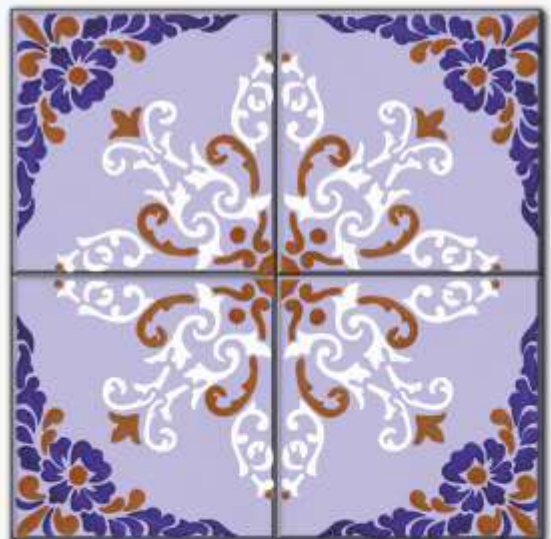
BB3



BB4



BB5



BB6



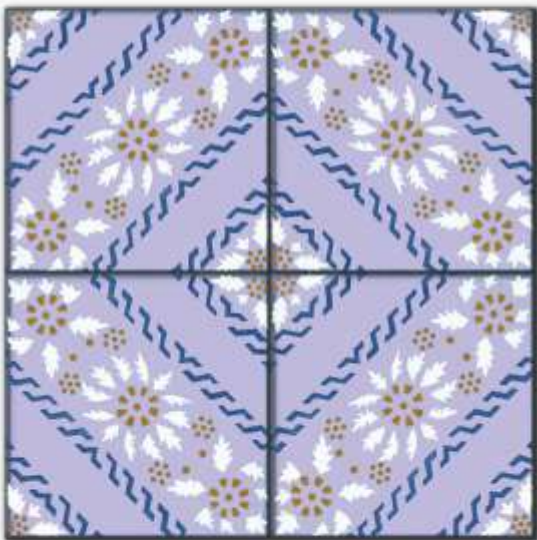
blu eoliano



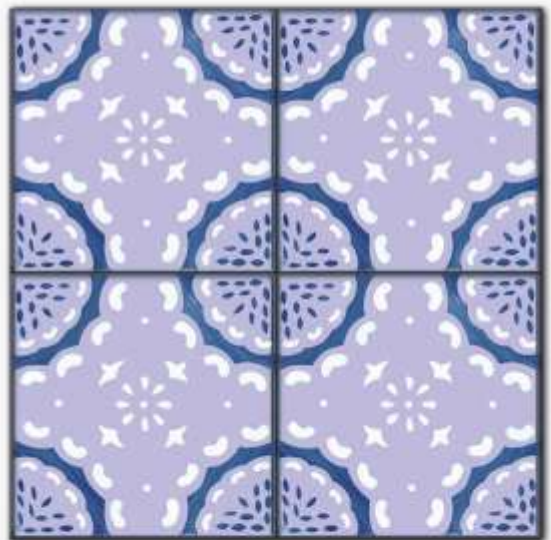
BB7



BB8



BB9



BB10



BB11



BB12





blu eoliano



BB13



BB14



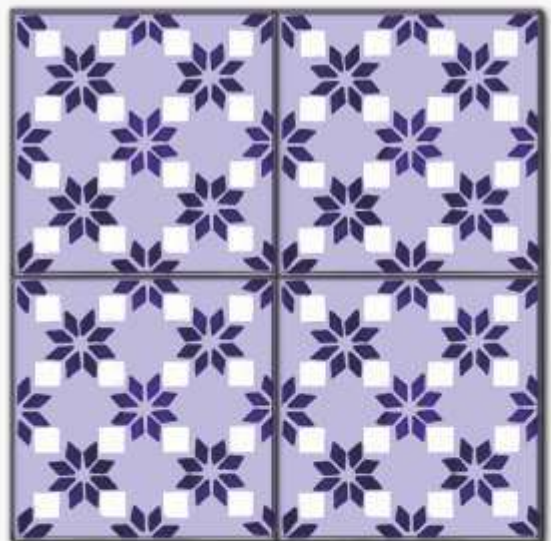
BB15



BB16



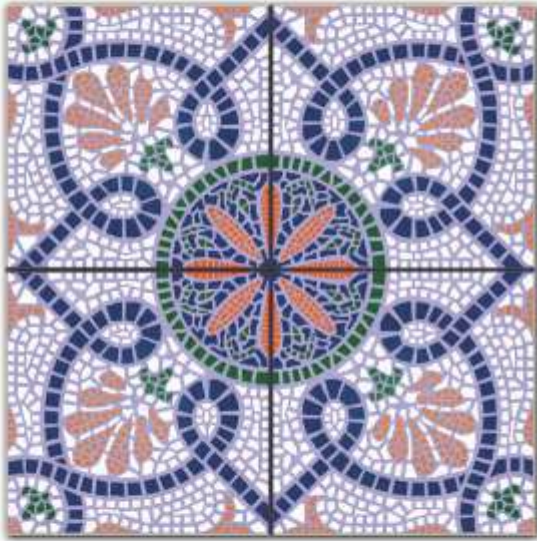
BB17



BB18



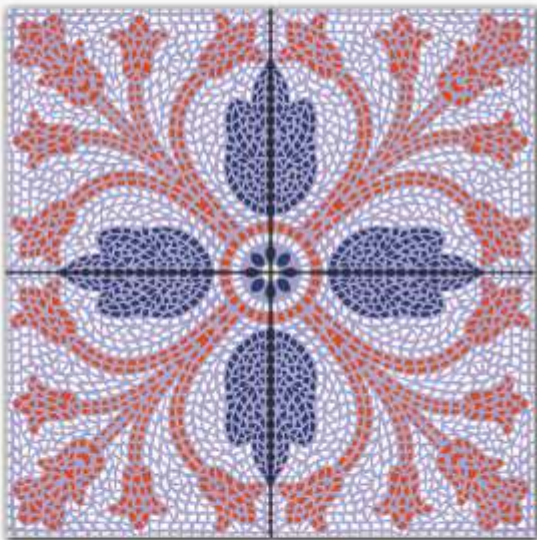
blu eoliano



BB19



BB20



BB21



BB22



BB23



BB24



blu eoliano



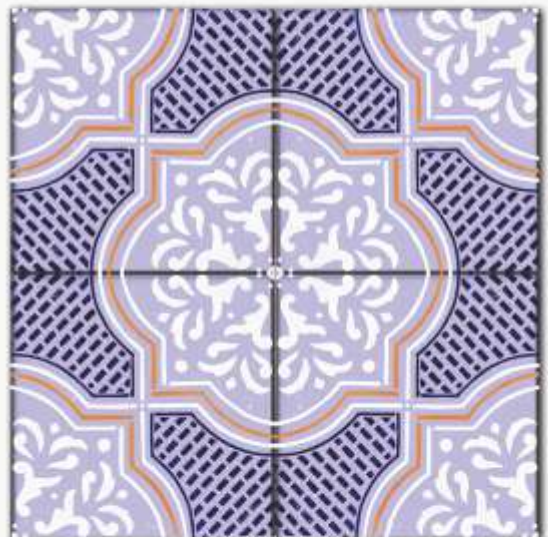
BB25



BB26



BB27



BB28



BB29



BB30



*base smalto
miele, rosa, verde
con decoro a più colori*





mielato



M1



M2



M3



M4



M5



M6



mielato



M7



M8



M9



M10



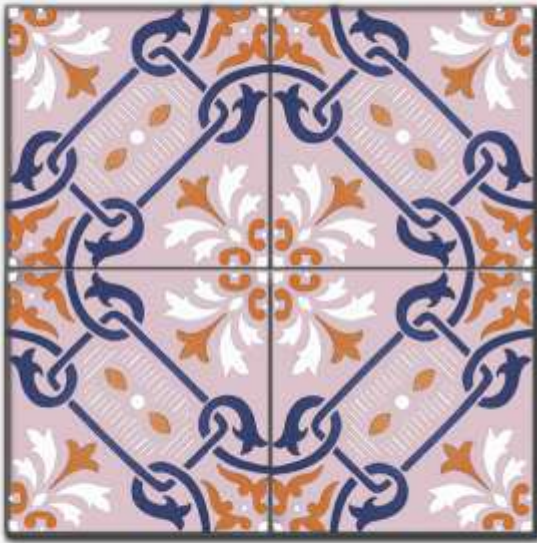
M11



M12



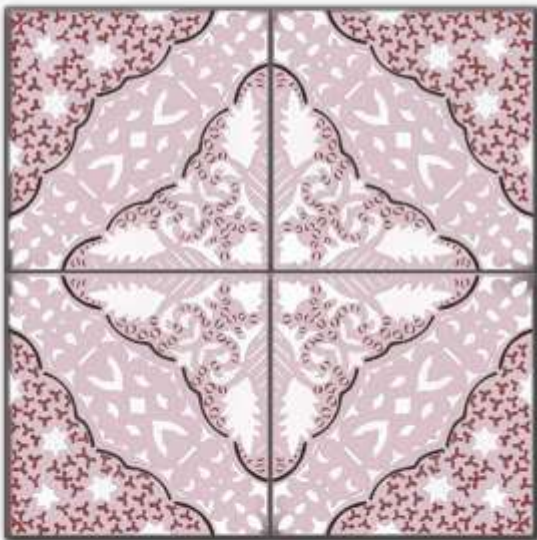
rosa antico



R1



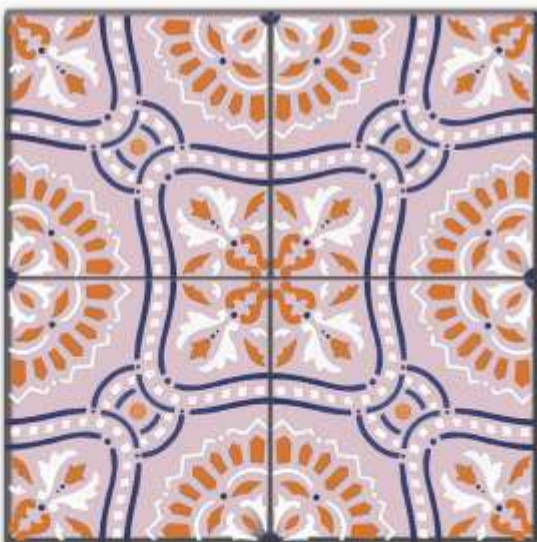
R2



R3



R4



R5



R6



rosa antico



R7



R8



R9



R10



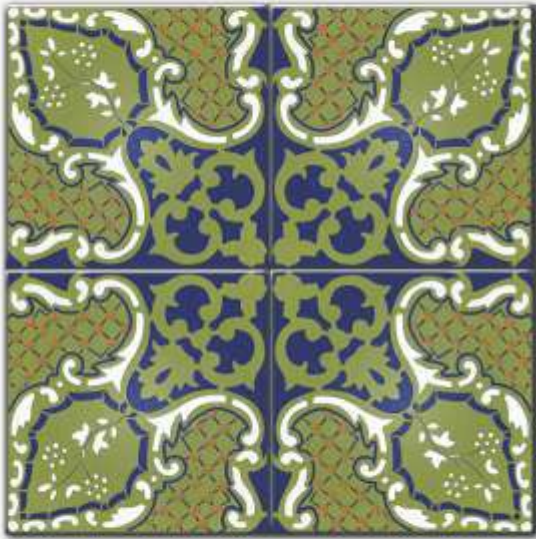
R11



R12



verde antico



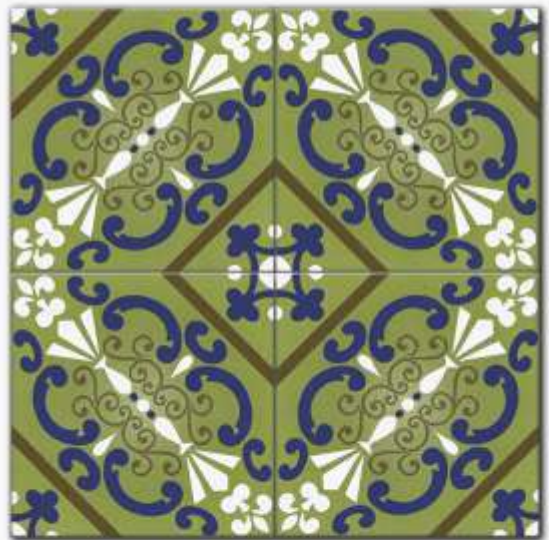
V1



V2



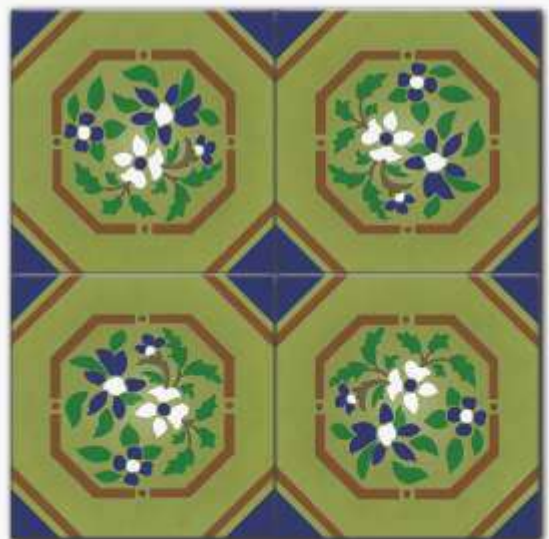
V3



V4



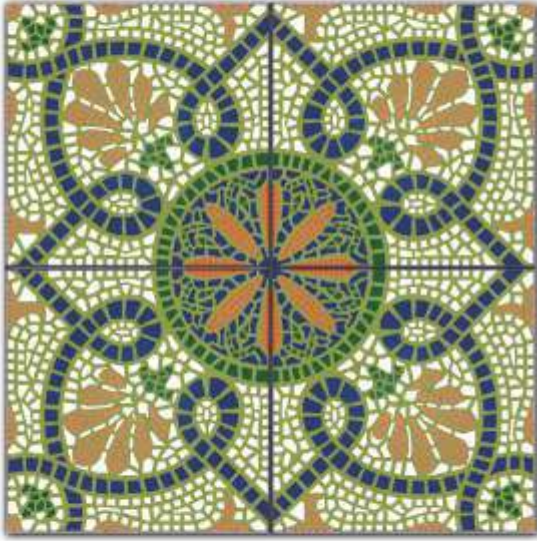
V5



V6



verde antico



V7



V8



V9



V10



V11



V12





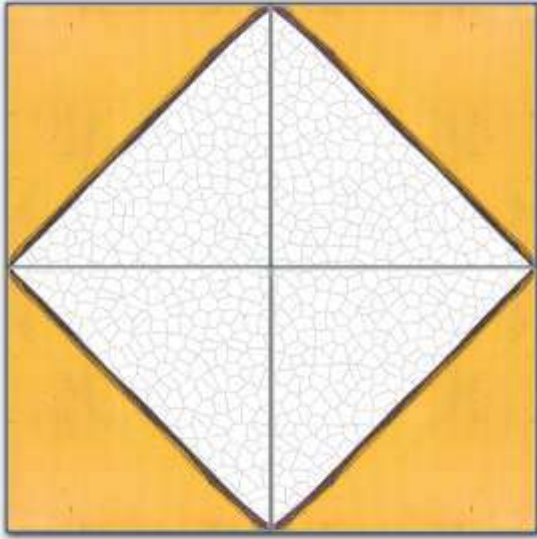
la vela



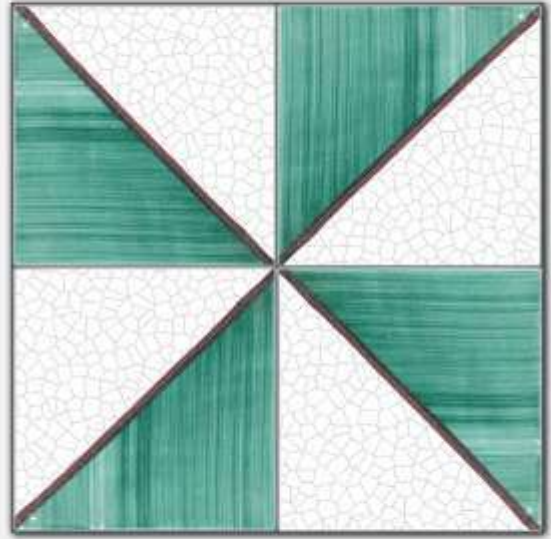
*il decoro più semplice e antico
componibile in una infinità
di motivi geometrici*



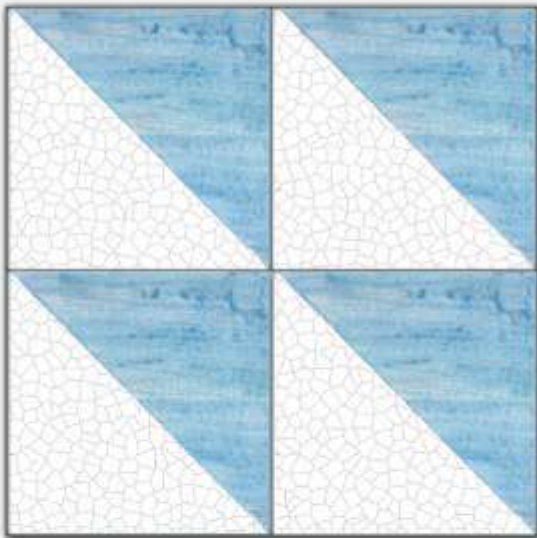
la vela



arancio



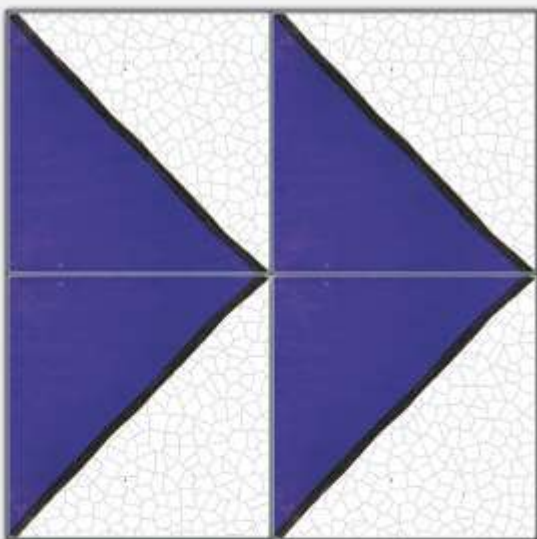
verde rame



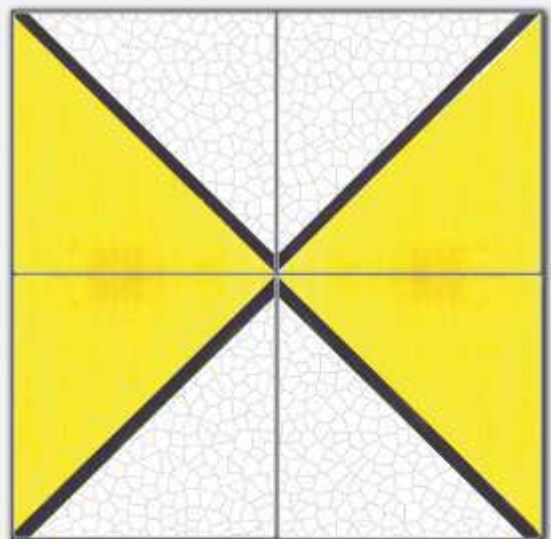
azzurro



rosso antico



blu



giallo







santo stefano



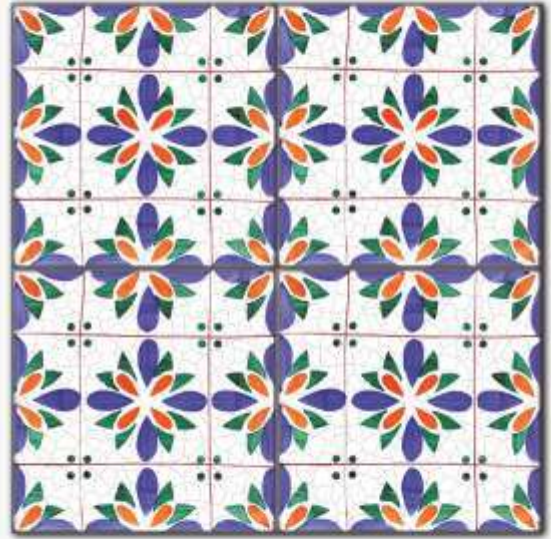
*base bianco antico con
decoro a più colori,
unisce tradizione ed eleganza*



santo stefano



Q1



Q2



Q3



Q4



Q5



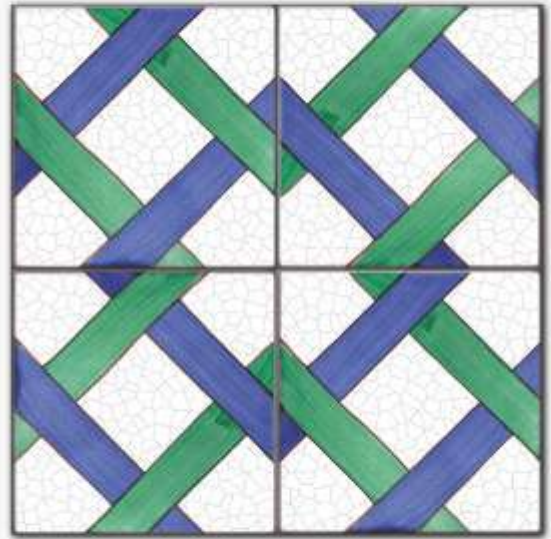
Q6



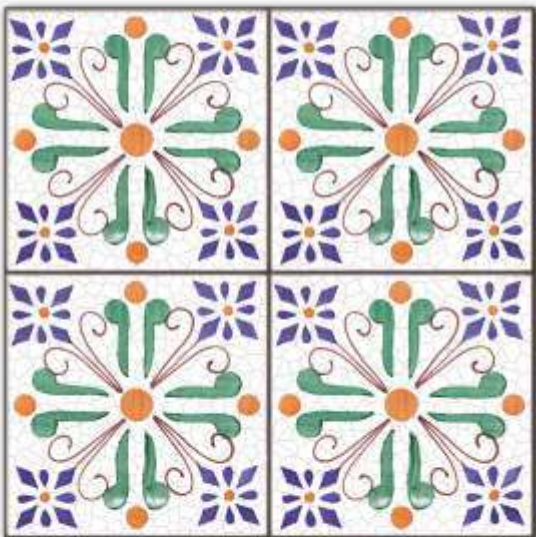
santo stefano



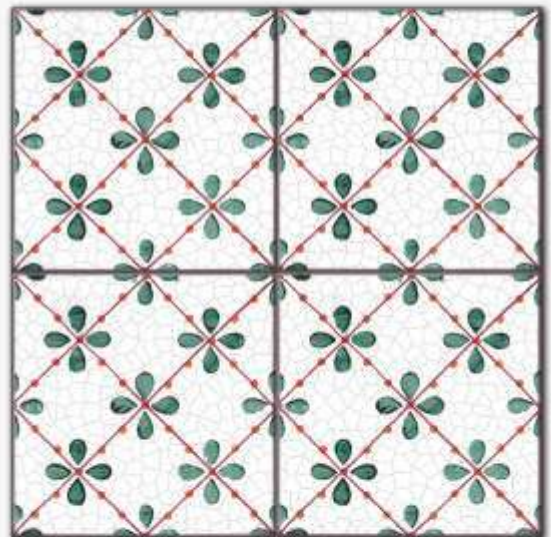
Q7



Q8



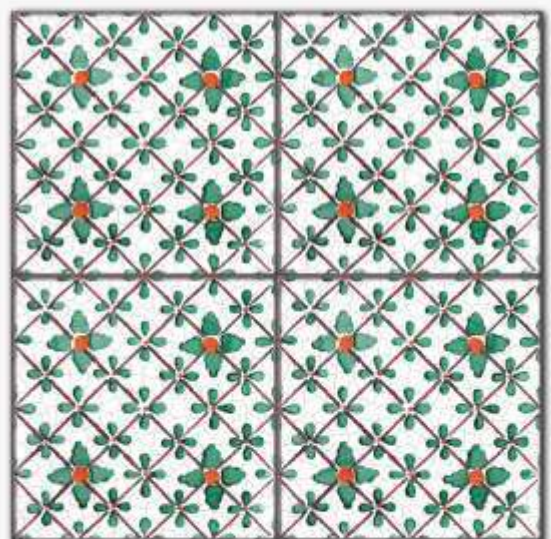
Q9



Q10



Q11



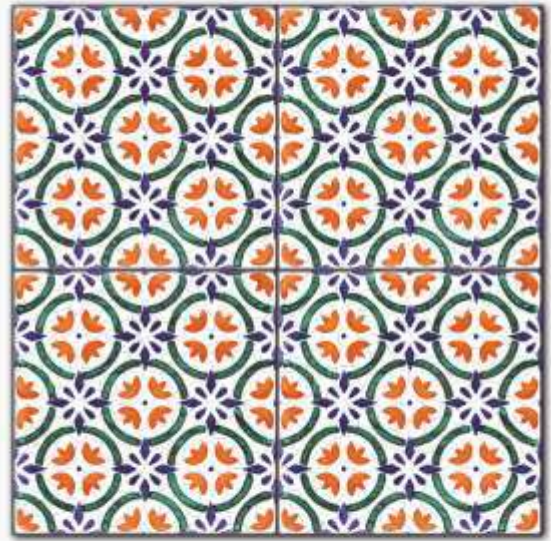
Q12



santo stefano



Q13



Q14



Q15



Q16



Q17



Q18



santo stefano



Q19



Q20



Q21



Q22



Q23



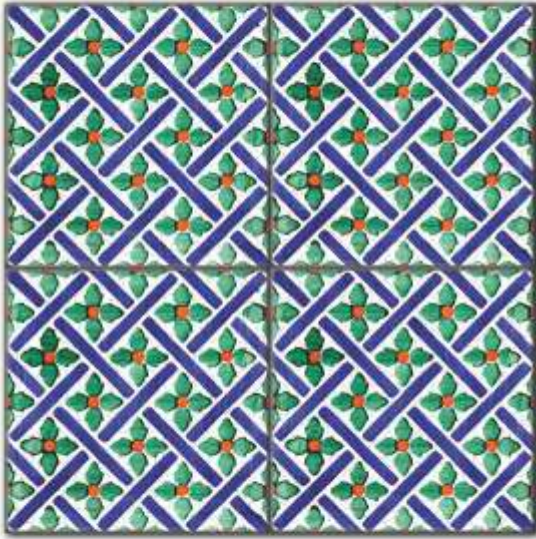
Q24







santo stefano



Q25



Q26



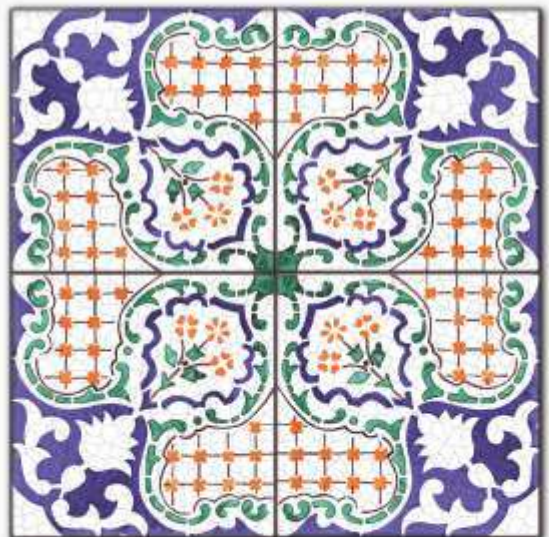
Q27



Q28



Q29



Q30



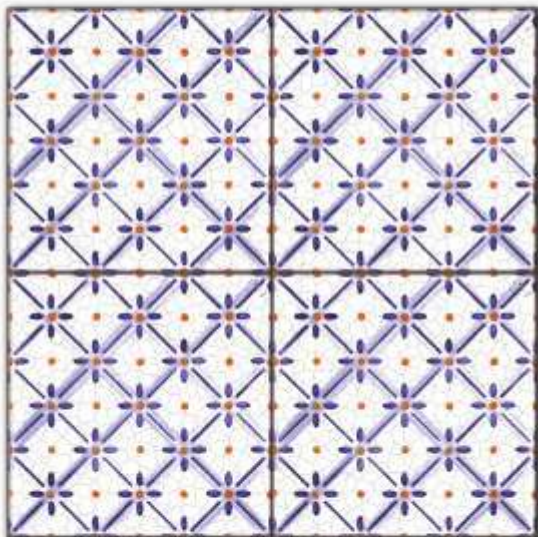
santo stefano



Q31



Q32



Q33



Q34



Q35



Q36



santo stefano



Q37



Q38



Q39



Q40



Q41



Q42



santo stefano



Q43



Q44



Q45



Q46



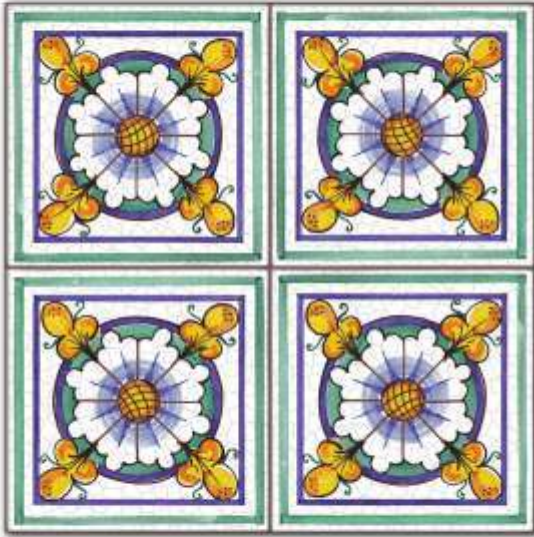
Q47



Q48



santo stefano



Q49



Q50



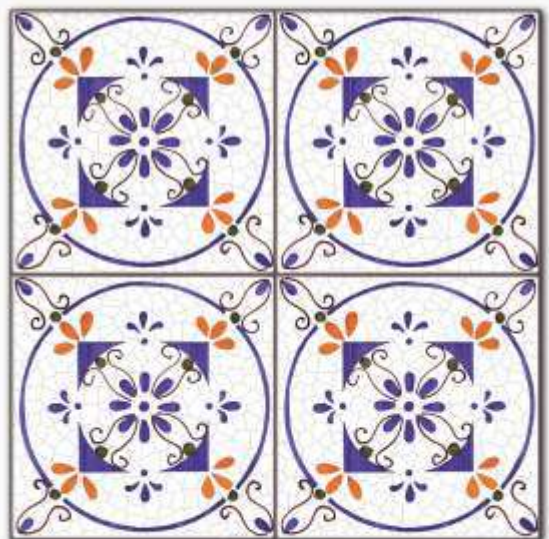
Q51



Q52



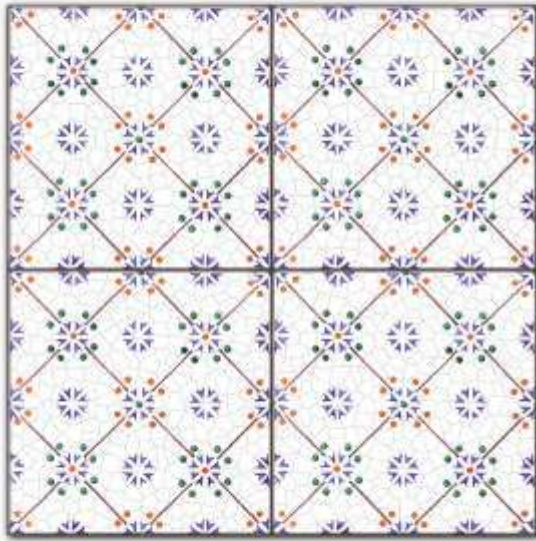
Q53



Q54



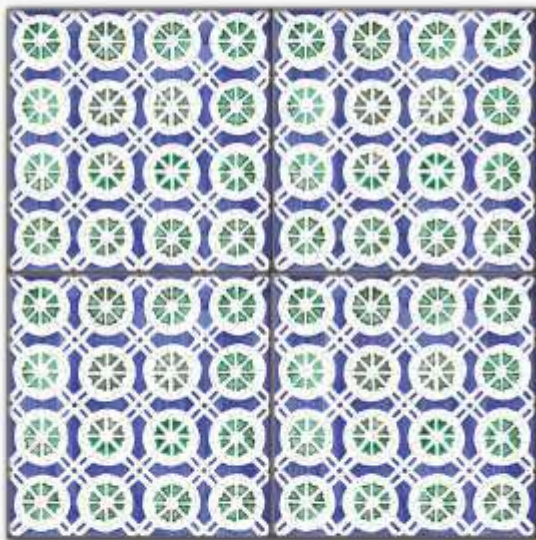
santo stefano



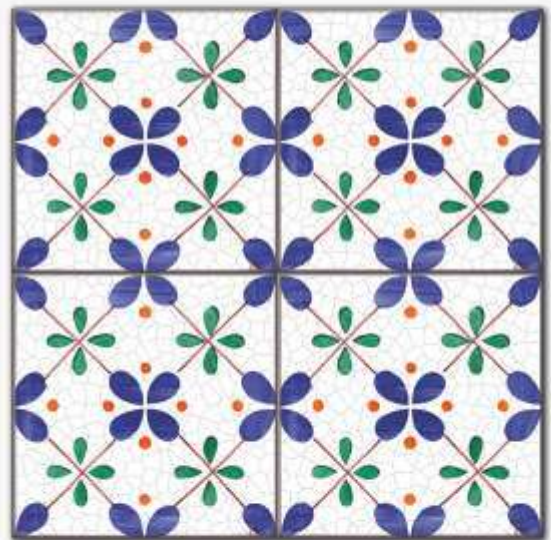
Q55



Q56



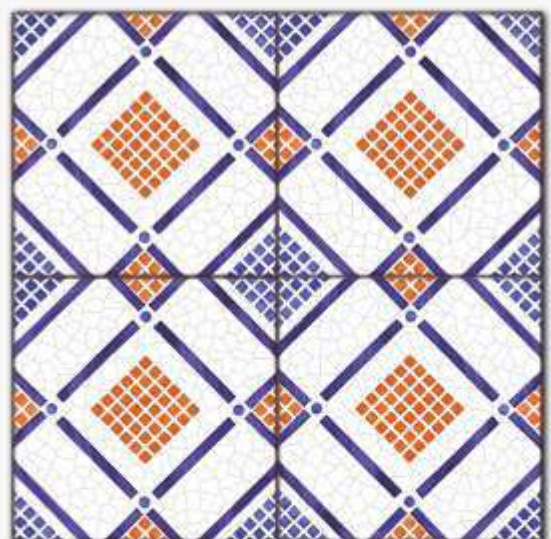
Q57



Q58



Q59



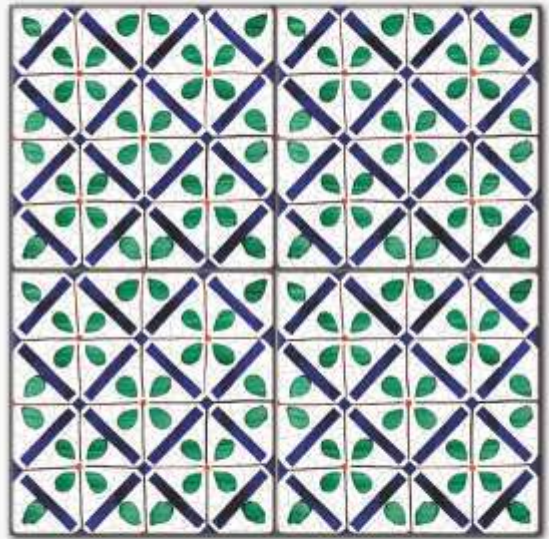
Q60



santo stefano



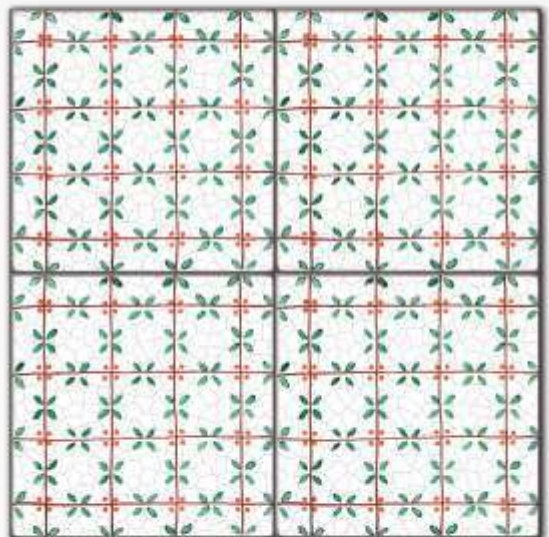
Q61



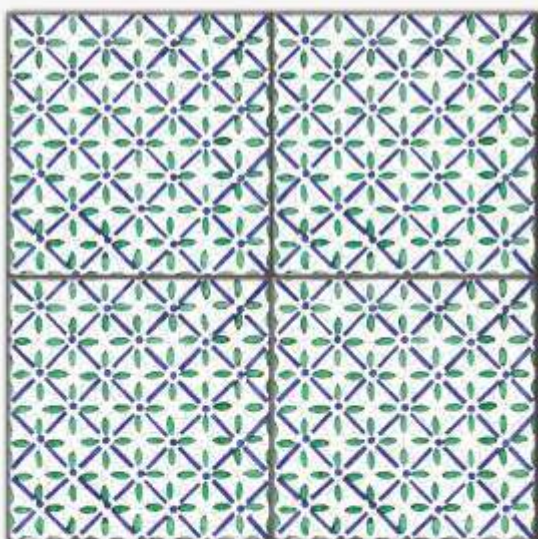
Q62



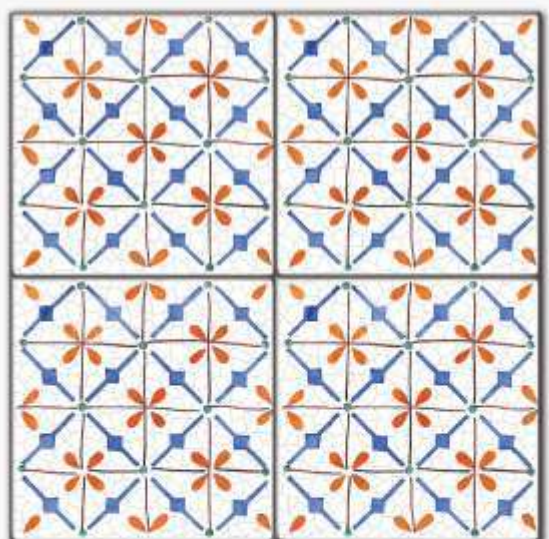
Q63



Q64



Q65



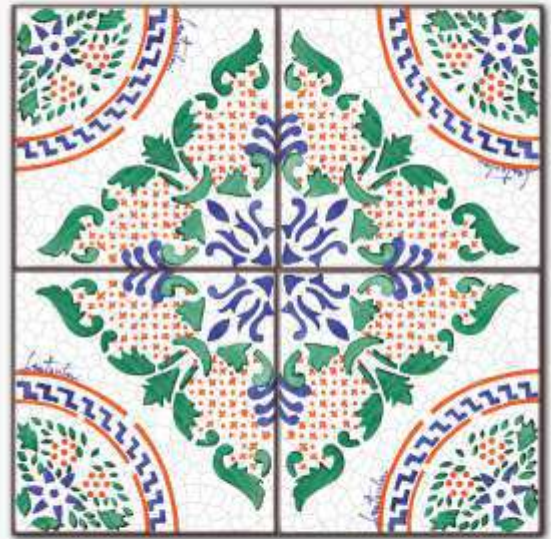
Q66



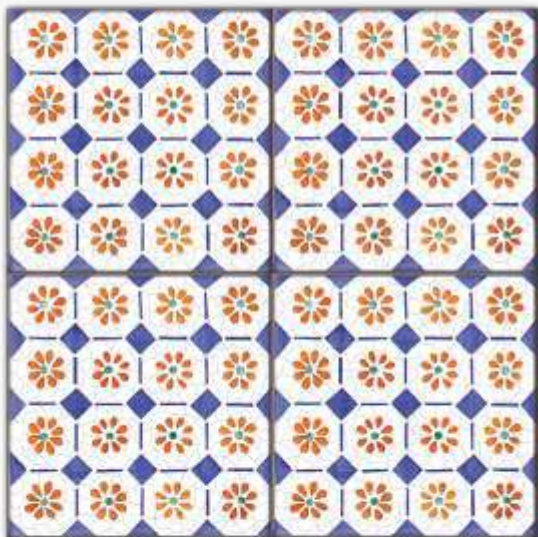
santo stefano



Q67



Q68



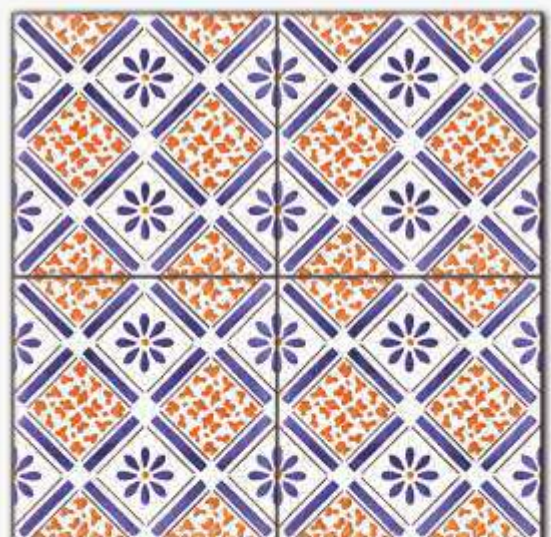
Q69



Q70



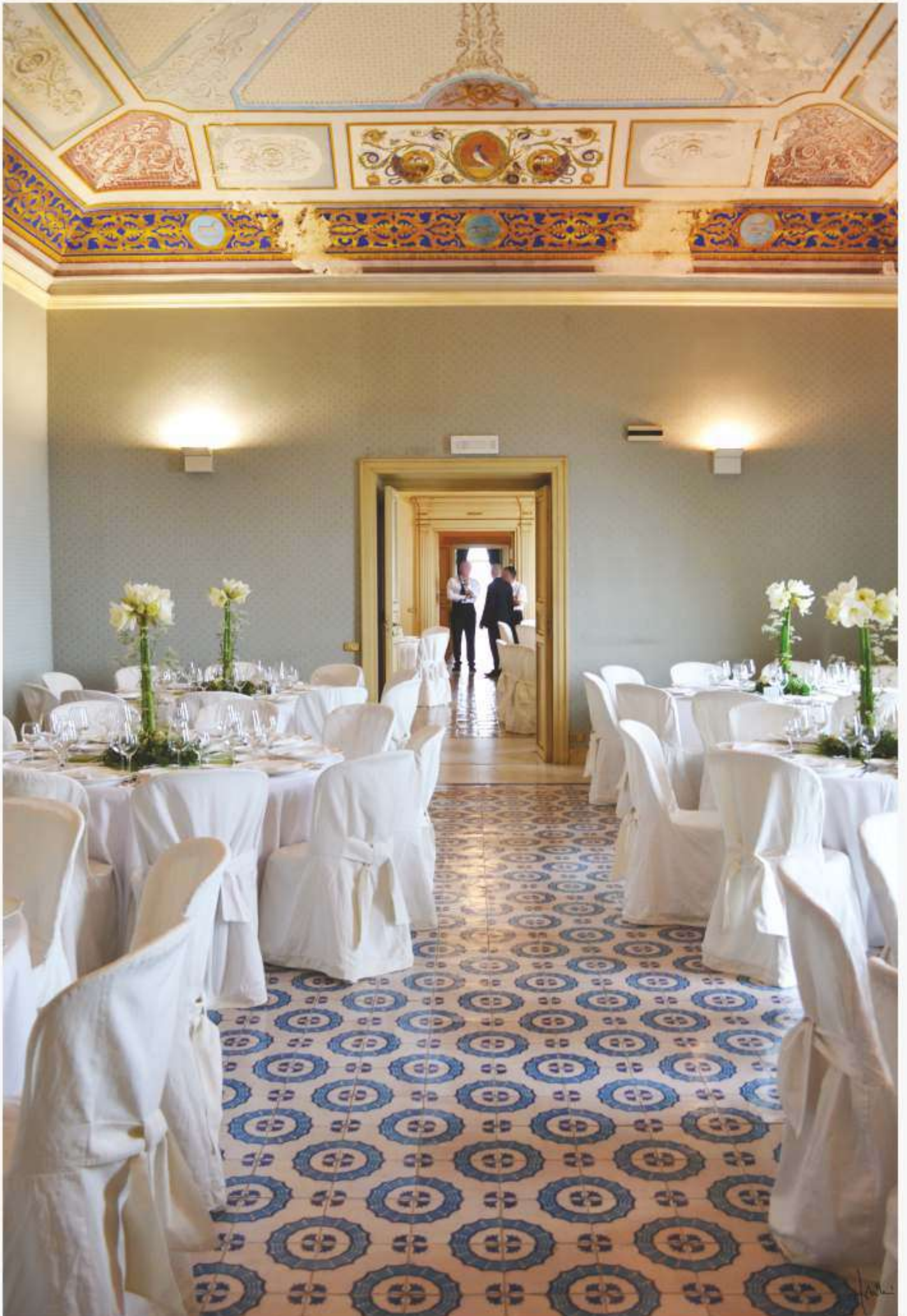
Q71



Q72

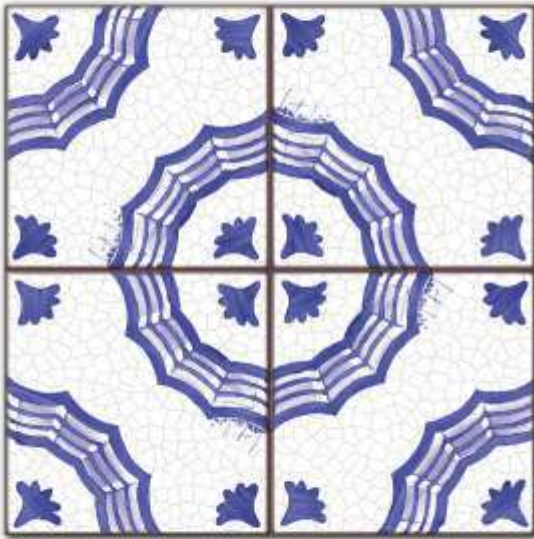


John

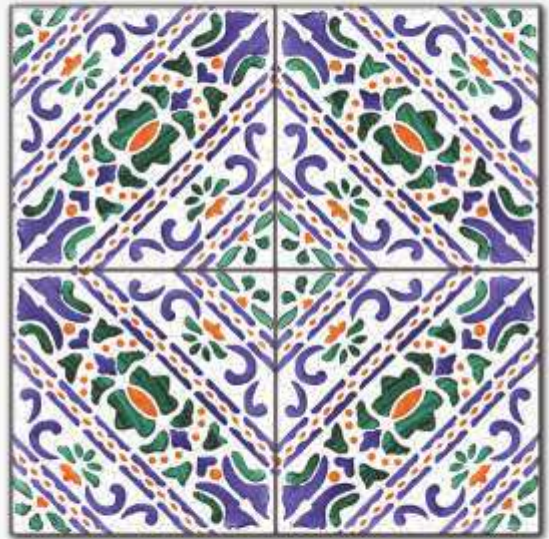




santo stefano



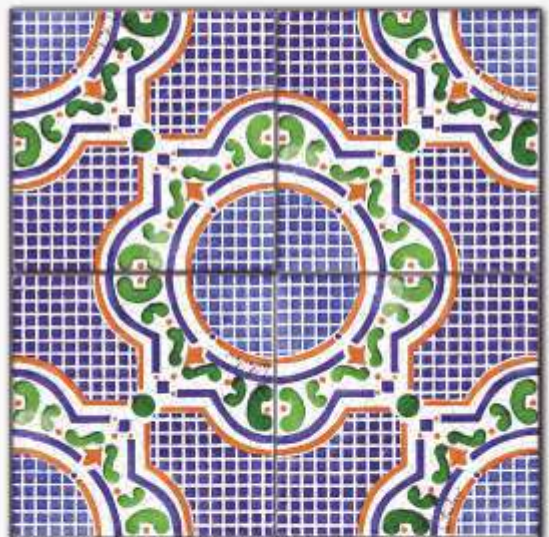
Q73



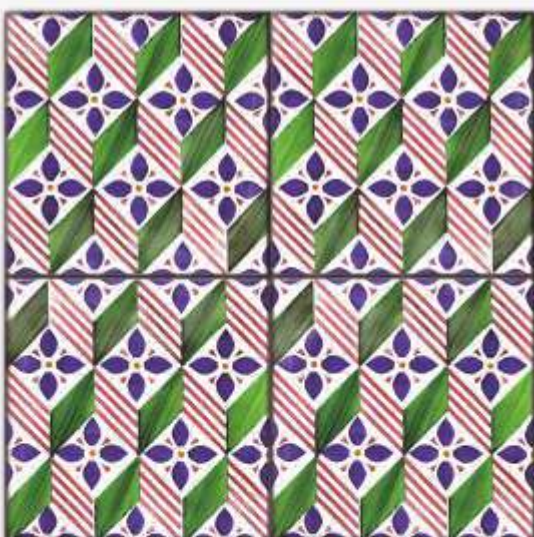
Q74



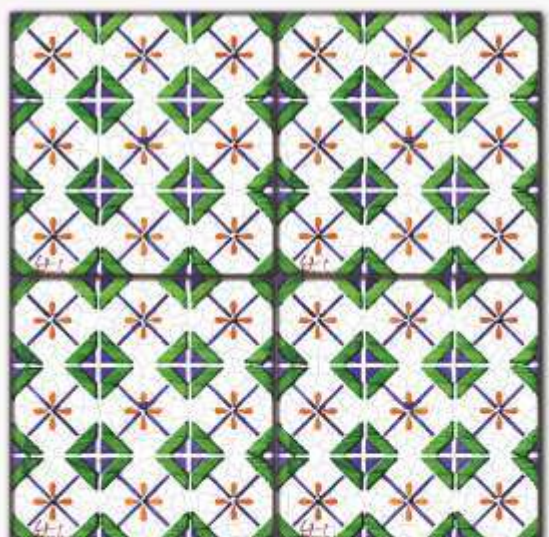
Q75



Q76



Q77



Q78



santo stefano



Q79



Q80



Q81



Q82

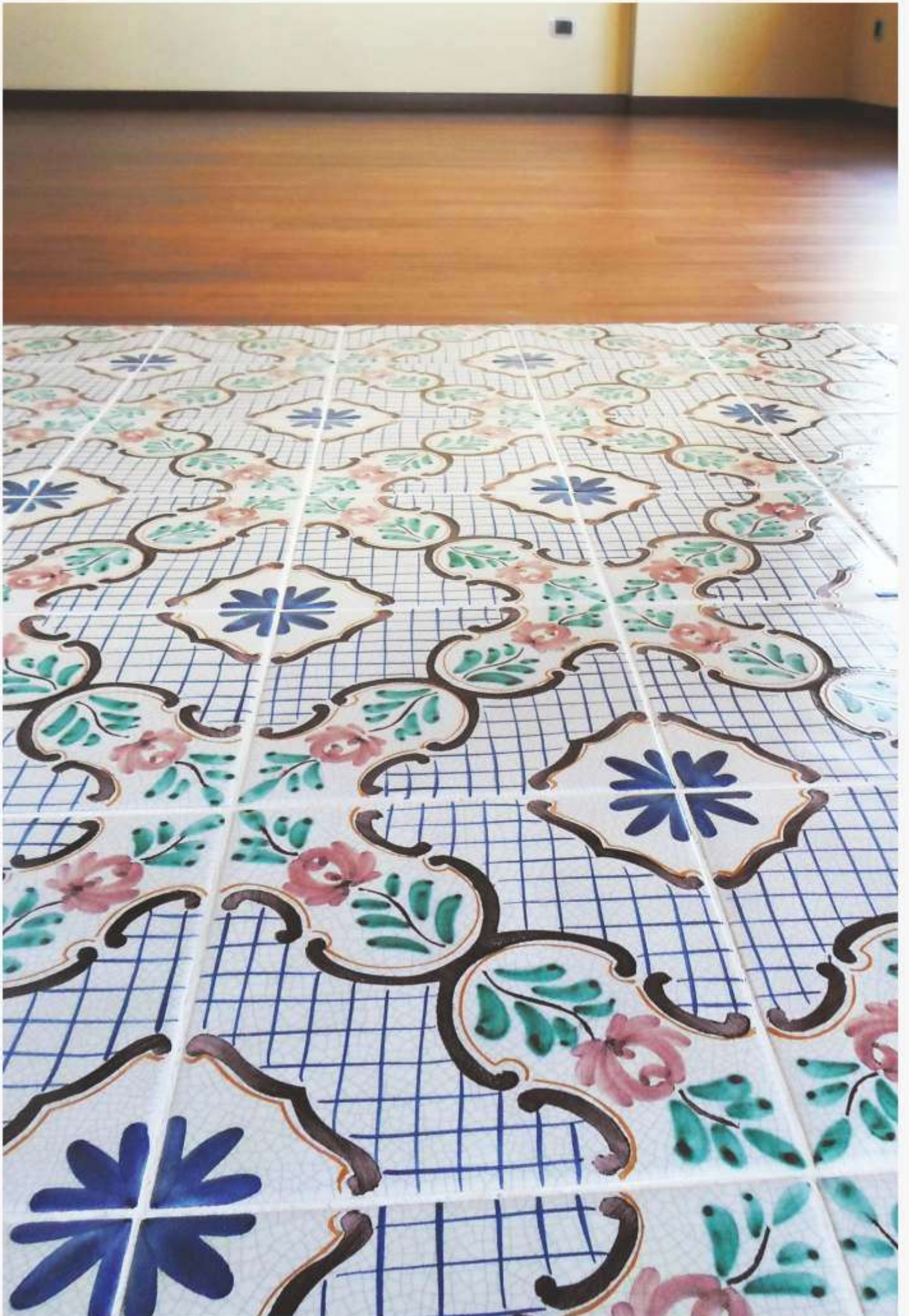


Q83



Q84







santo stefano



Q85



Q86



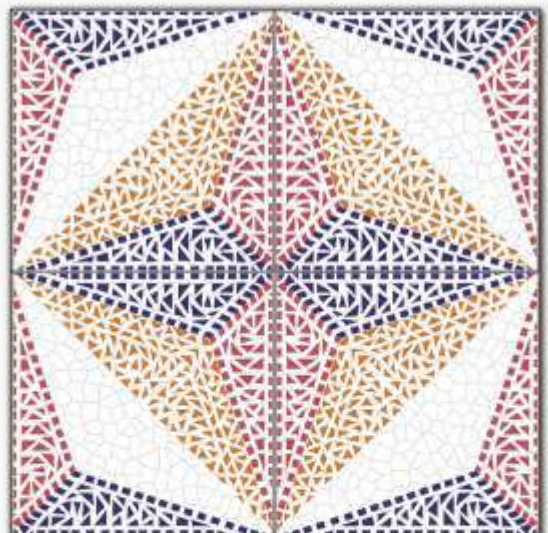
Q87



Q88



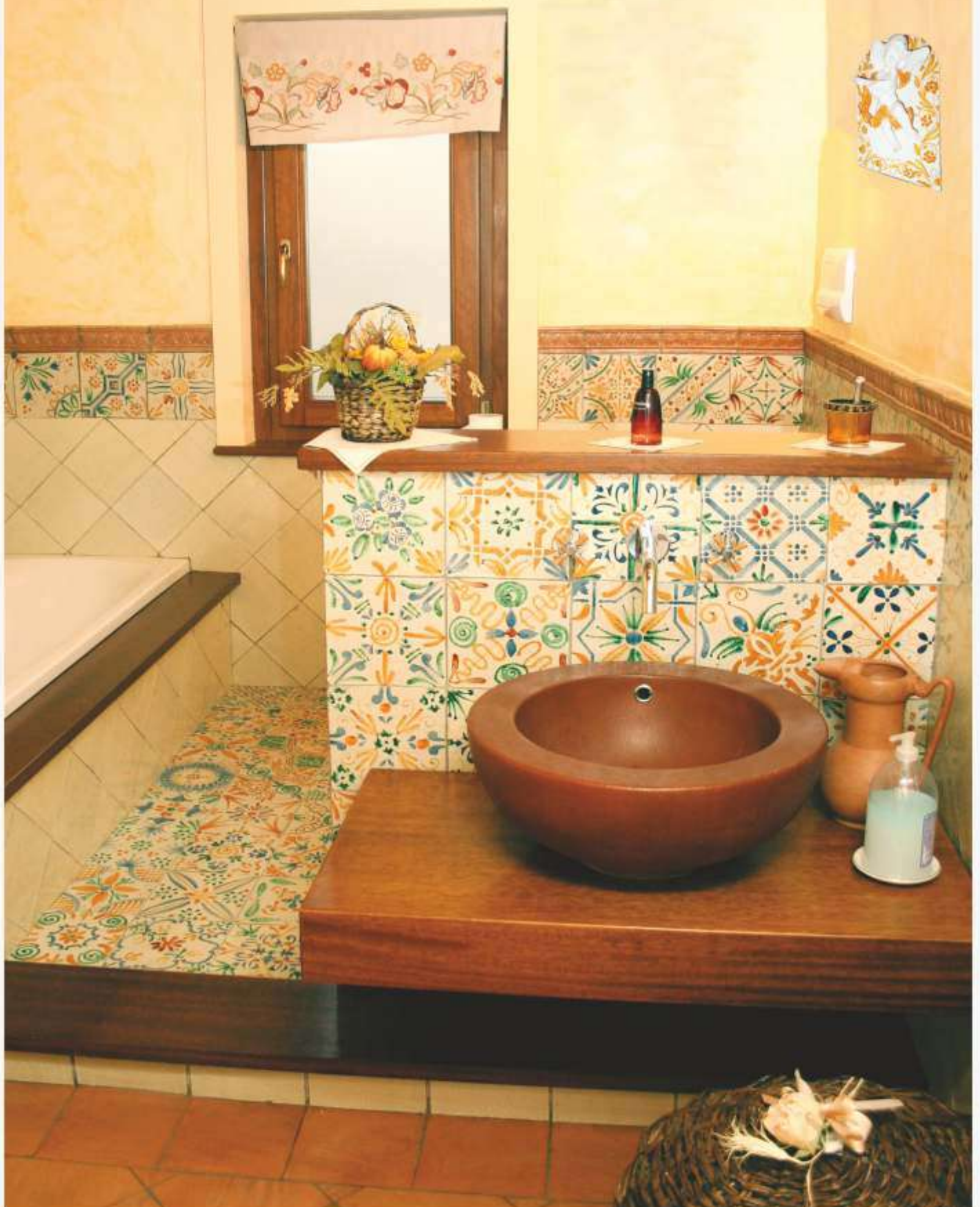
Q89



Q90



mediterraneo
decori misti su fondi cristallini









mediterraneo



medi antico



velo antico



medi miele



velo miele



medi verde



velo verde



medi blu



velo blu



medi mare



velo blu





- fasce -
- pezzi speciali -



*un vasto assortimento di fasce
e pezzi speciali
decorati a mano da abbinare
a tutte le serie*





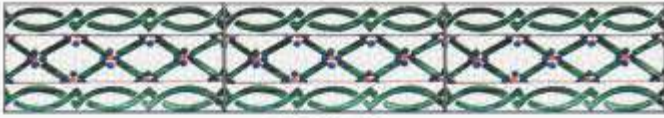
fasce



FP1



FP2



FP3



FP4



FP5



FP6



FP7



FP8



FP9



FP10



FP11



FP12



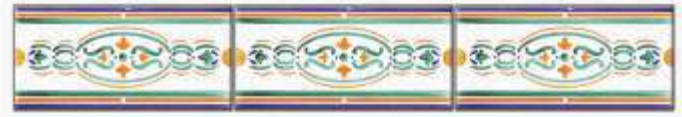
FP13



FP14



FP15



FP16



FP17



FP18



fasce



FP19



FP20



FP21



FP22



FA1



FA2



FA3



FA4



FA10



FA11



FA12



FA14



FA15



FA16



FA17



FA19



FA20



FA21



fasce



FL2



FL3



FL4



FL7



FL8



FL9



FL10



FL11



FL12



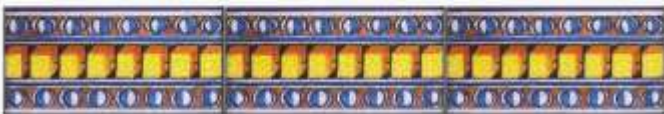
FL13



FL14



FL16



FL18



FL19



FL20



FL21



FL22



FL23



pezzi speciali



L1 - capitello grande



L5 - london



L4 - sigaro basso



L2 - capitello



L3 - sigaro liscio grosso



L6 - matita



L8 - sigaro lavico grosso



L7 - sigaro lavico piccolo



PS1



PS2



PS4



PS3

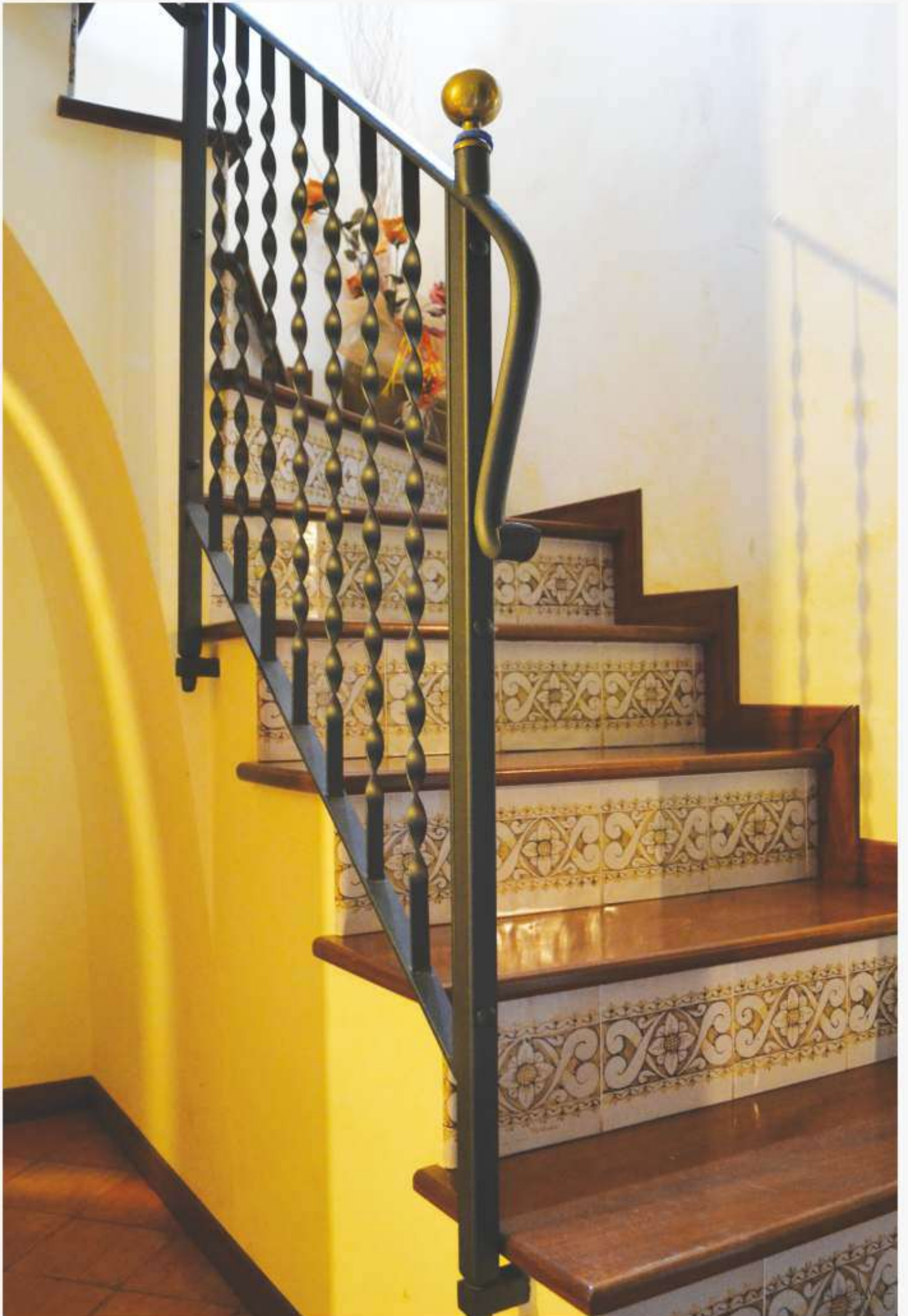


LZ - battiscopa



tutantani







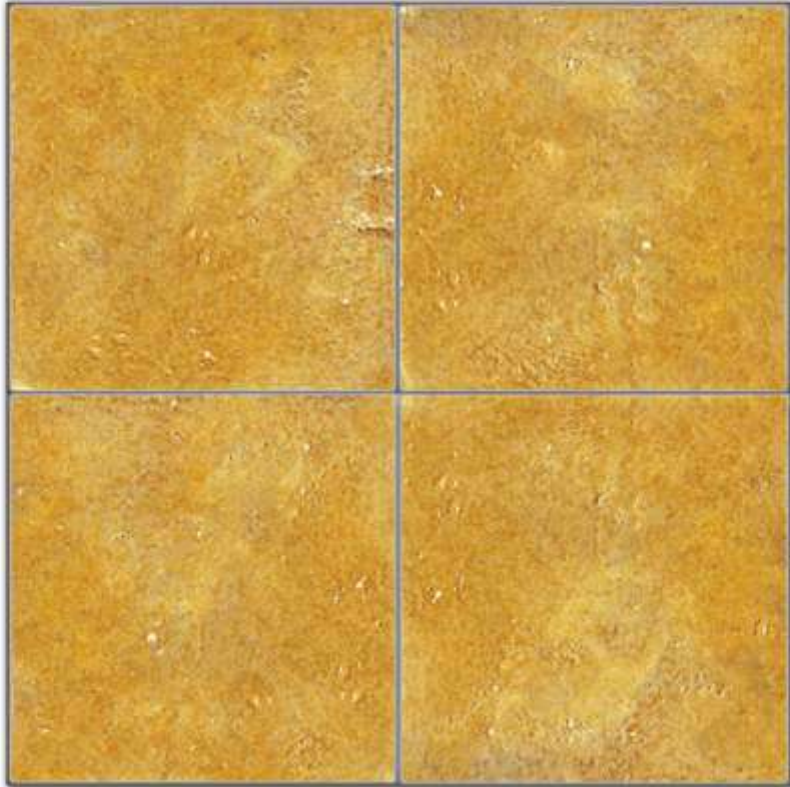
serie lunaria



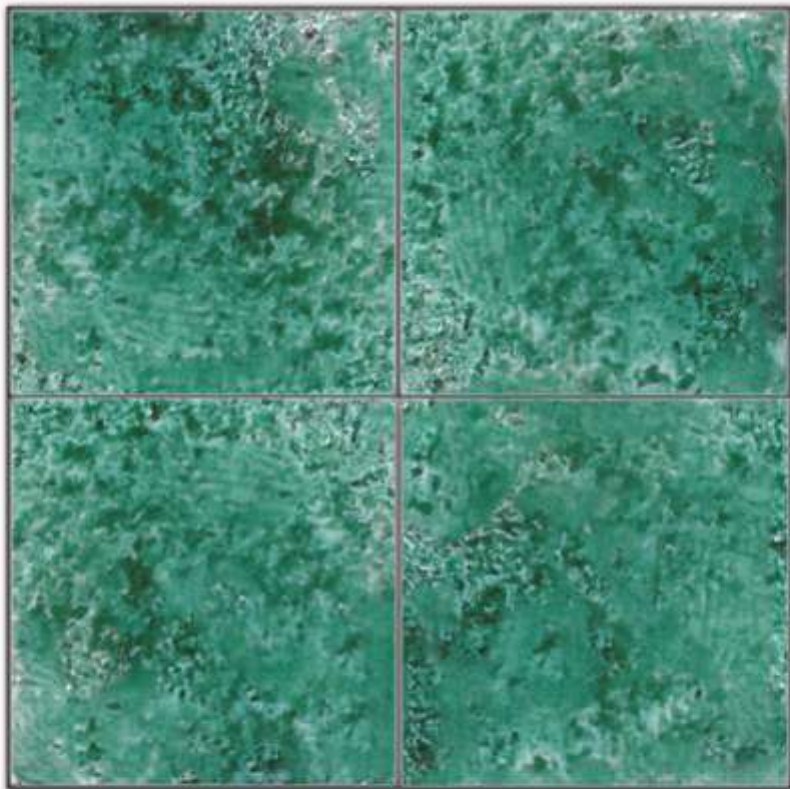
*l'evidente irregolarità della superficie
ne esalta le sfumature dai luminosi riflessi*



lunaria



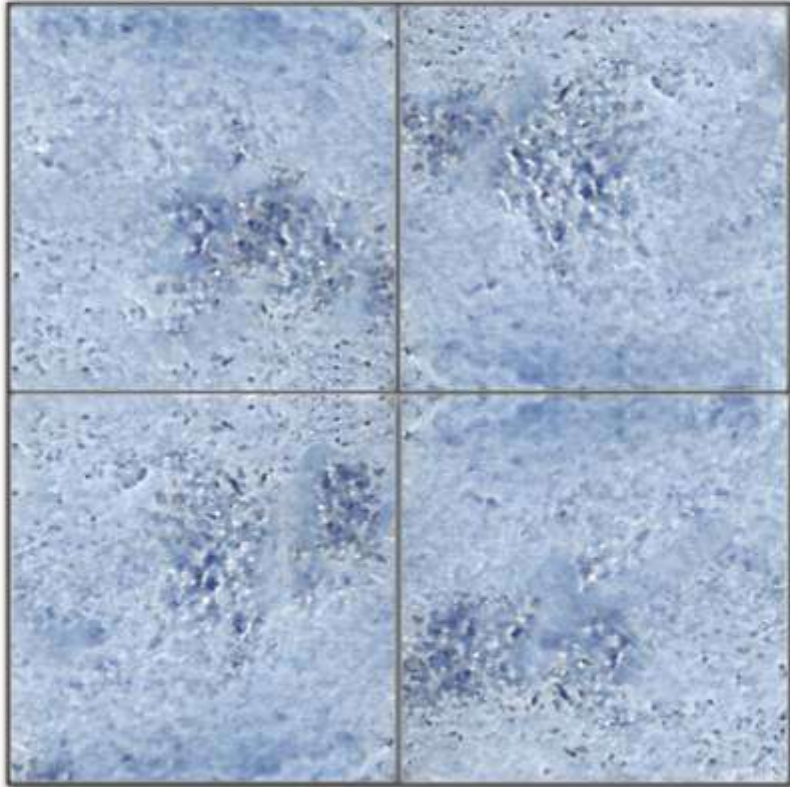
luna arancio



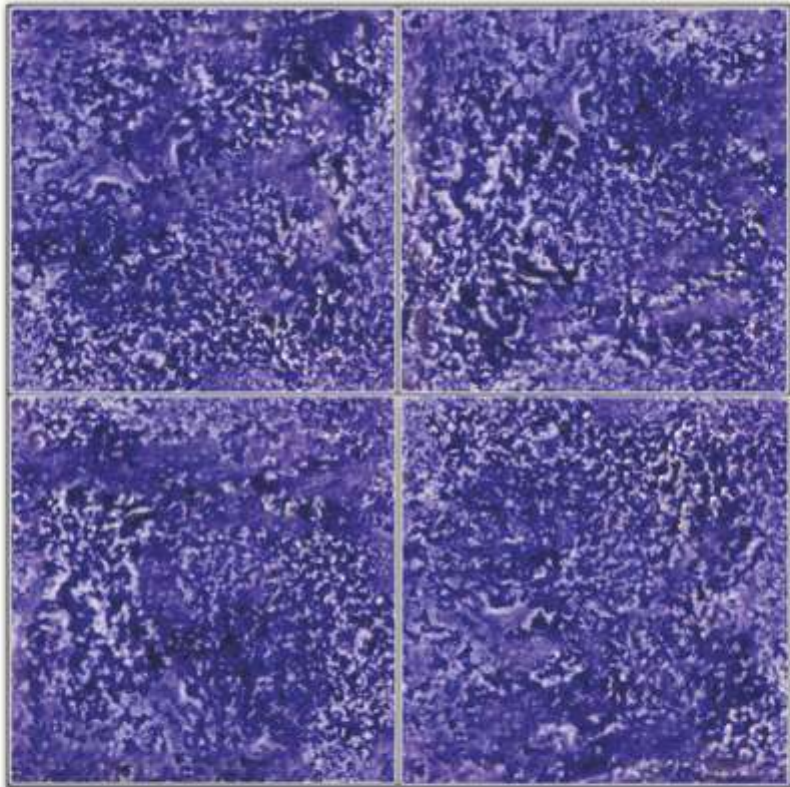
luna verde



lunaria



luna azzurra

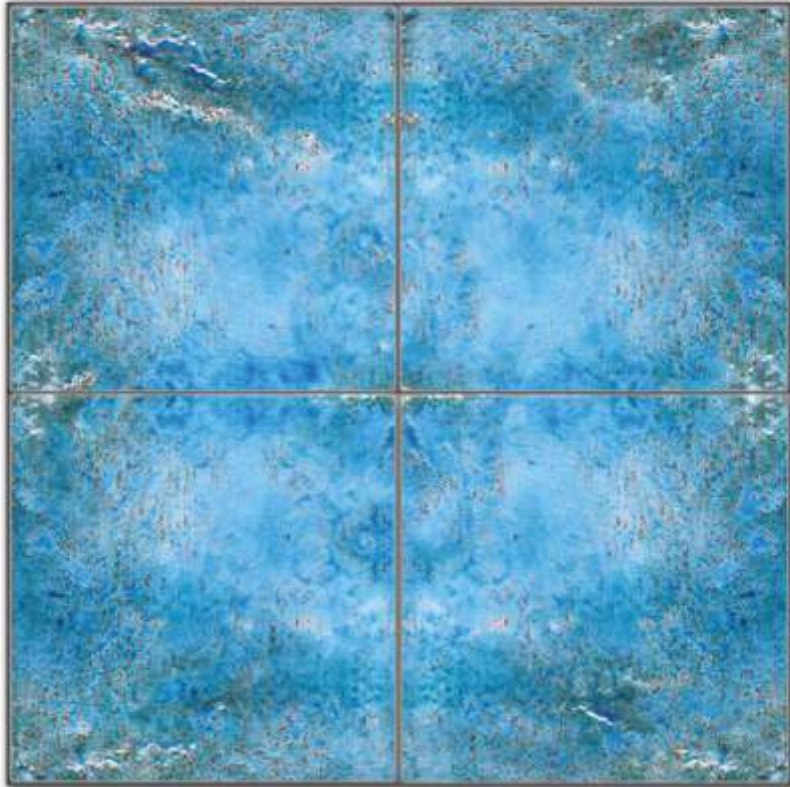


luna blu





lunaria



luna turchese



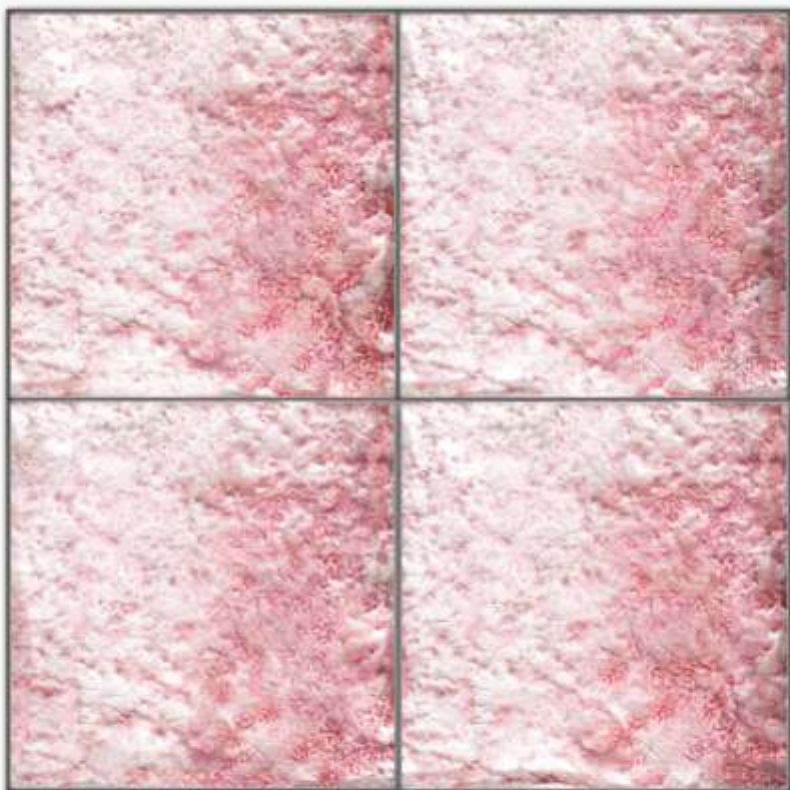
luna bianca



lunaria



luna miele



luna rossa





il cotto lavico

rustico con argilla miscelata a polvere di lava

il cotto aragonese

stonalizzato con argilla non filtrata





il cotto



Quadrato



Losanga



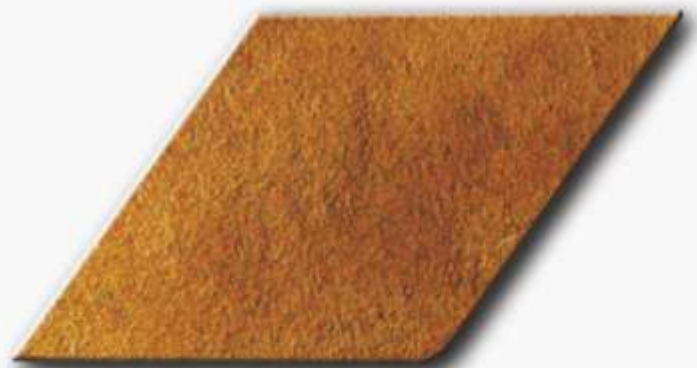
Rettangolo



Esagono



Ottagono



Rombo





La Lava

Le lastre di basalto lavico provengono dalle più selezionate cave delle pendici dell'Etna

“conservate” in natura da almeno 200 mila anni.

I piani di lava sagomati e rifiniti vengono poi decorati secondo le tecniche della migliore tradizione siciliana. Le caratteristiche naturali dei manufatti garantiscono alta resistenza agli agenti atmosferici, alle basse temperature e alla normale usura.





i colori della lava



bianco lucido



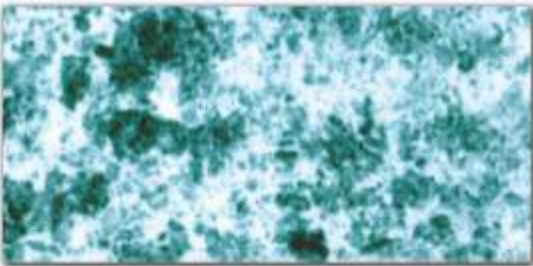
bianco antico



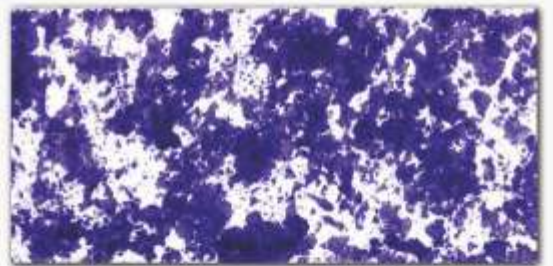
tamponato bianco



tamponato arancio



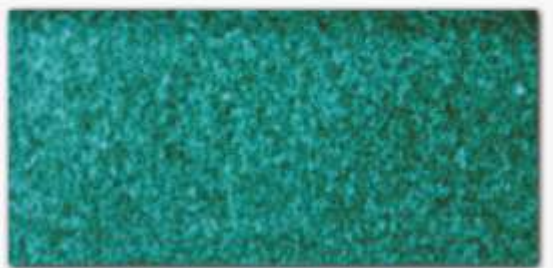
tamponato verde



tamponato blu



verde smeraldo



verde rame



giallo



arancio



i colori della lava



turchese



azzurro



velo blu



blu



rosso antico



rosso vivo



rosso rubino



viola



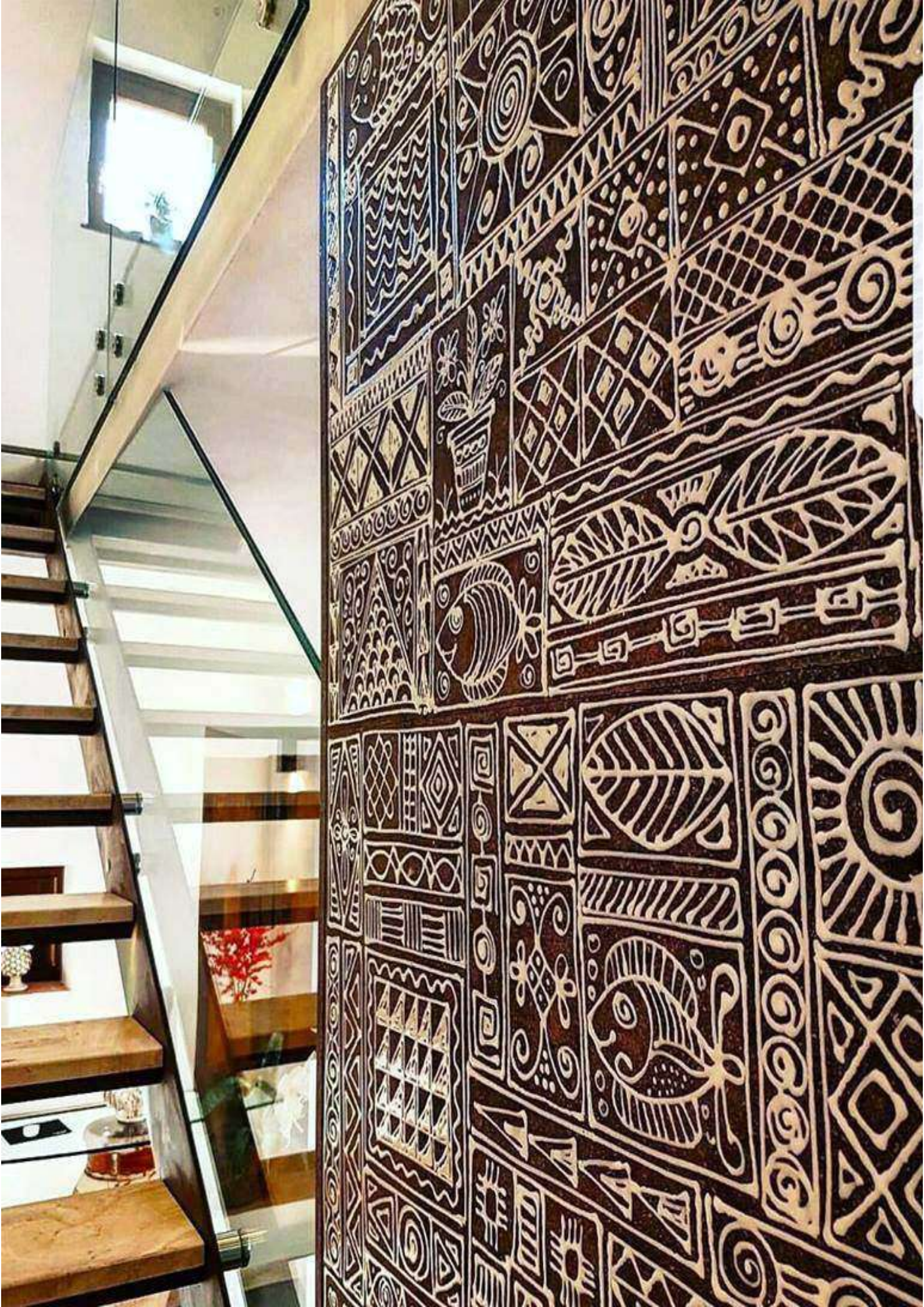
naturale spazzolato



nero lucido



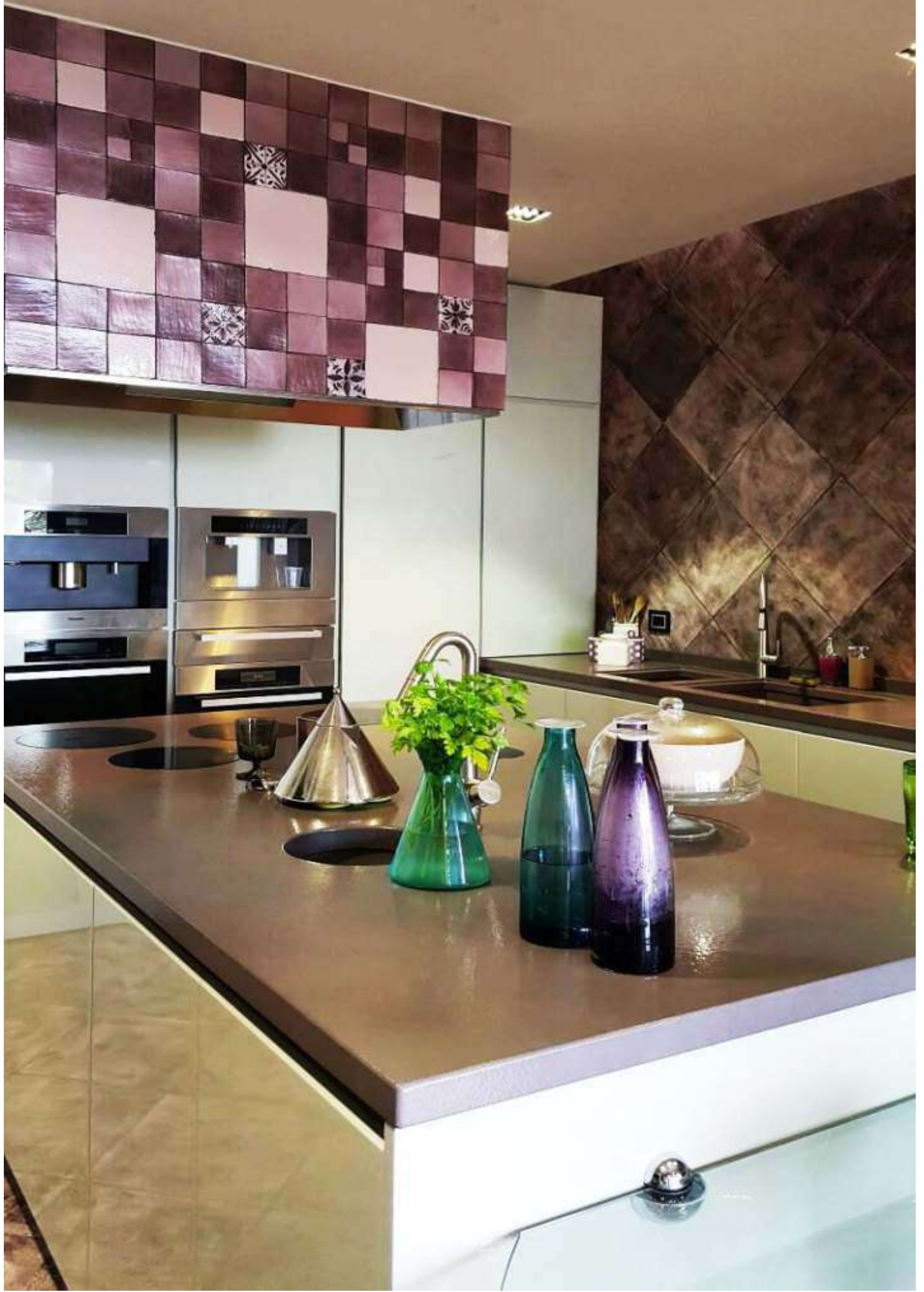




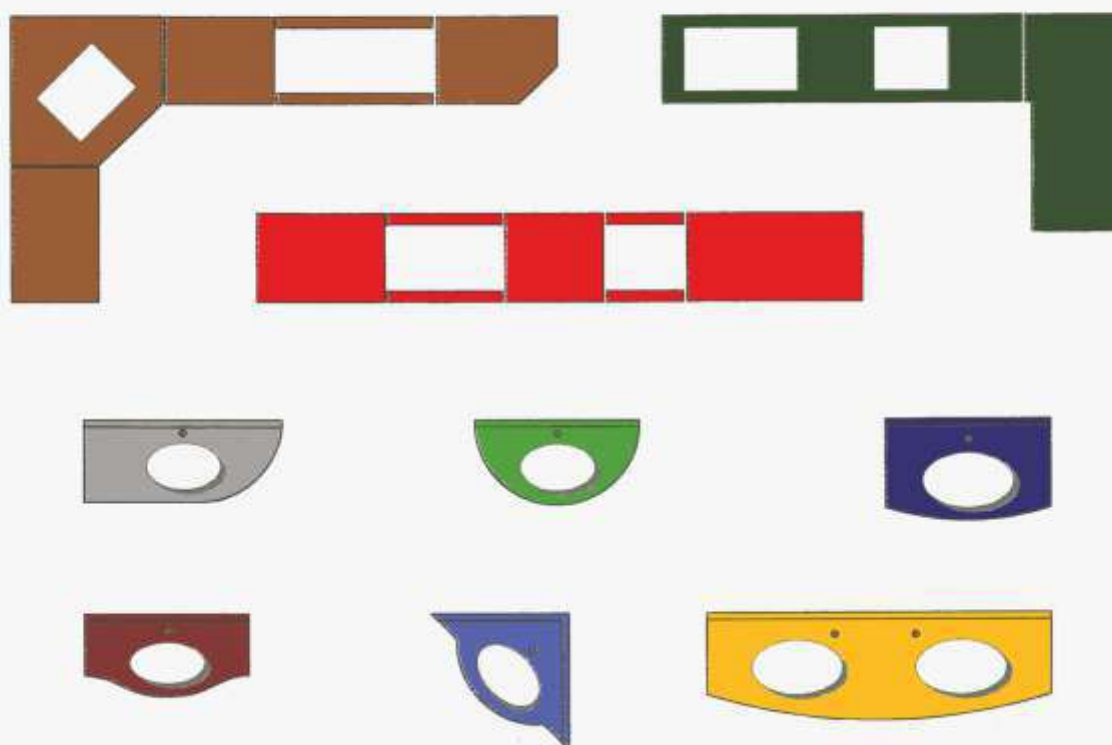








Alcuni esempi di piani sagomati



La lava vulcanica ha una superficie smaltata e finemente lavorata. Le dimensioni massime ottenibili sono di cm 160 x 300 con tutte le forme regolari e semi-irregolari possibili.

E' adatta ad essere utilizzata per qualsivoglia inserimento: cornici per riquadratura di pavimenti, imbotti di porte e portoncini, frontali di caminetti, elementi architettonici di profilatura in facciate di ville ed edifici, pannelli centro stanze in abbinamento alle cornici coordinate, pannelli murali, piani di tavoli, sedili e panchine, piani per bagni e cucine abbinabili con le nostre piastrelle per colori e decorazioni, e ogni altro inserimento che la fantasia e il gusto possono suggerire.



FRATANTONI
KERAMOS

Daniela Fratantoni

+39 320 663 6008

info@fratantonikeramos.it